



WHERE MUSCLE
STILL MATTERS

Annual Production Sale



SATURDAY, FEBRUARY 14TH, 2026
1 PM - AT THE RANCH
WETONKA, SOUTH DAKOTA

Celebrating 43 Years in the Limousin Breed

SALE INFO

VIEW AND BID ONLINE:

- View the sale or bid online at www.dvauction.com

SUPPLEMENT INFORMATION:

- Yearling Weights, Scrotal Measurements and Ultrasound data will be available sale day and online at www.treftzlimousin.com

TRUCKING AND BOARDING:

- Free boarding on yearling bulls until fertility tested—generally by April 1, 2025. A charge of \$2.50 per day after that. Boarding no longer than May 1, 2025
- Fall and two-year-old bulls picked up or delivered by March 1, 2025. A charge of \$5.00 per day after that. \$50 off on these bulls picked up sale day. Boarding no longer than May 1, 2025
- Free delivery up to 150 miles on yearling bulls
- All females to be taken home sale day or shortly after

PURCHASER OBLIGATION:

- All animals are at risk of the purchaser once sale is made
- Border fees out of the U.S. is the responsibility of buyer

HEALTH AND PAPERWORK:

- Vaccinations—(Spring) Vira-Shield 6 with Somnus, Pasteurella Presponse, Ultrabac 7; (Fall) Covexin 8, Inforce 3, Presponse. Booster-Vira-Shield 6+Somunus, Oral Wormer, Cylence and Cleanup Pour On
- Health papers and brand release furnished where required.
- Registration papers transferred to new owner.

VIEWING, CATALOG AND VIDEOS:

- Catalog and videos of bulls can be viewed online at www.treftzlimousin.com, www.mcmarketingmanagement.com or www.dvauction.com
- Buyers are encouraged to view the cattle any time prior to sale date in case of inclement weather sale day. All cattle sell under the standard terms and conditions of the North American Limousin Foundation

AUCTIONEER:

- Chisum Peterson (605) 730-4214

SALE CONSULTANT:

- Kiley McKinna, MC Marketing Management(402) 350-3447
- Wiley Fanta, MC Marketing Management (320) 287-0751

SPECIAL GUESTS:

- Andy Rest, Cattle Business Weekly..... (406) 670-5678
- Kaylee White , Heartland Limousin Assn(605) 461-0153
- Garth Waletich, Aberdeen Livest.....(605) 290-3546
- Justin Dikoff, DV Auction.....(605) 290-0635
- Jim Scheel, Special Assignment.....(605) 545-1521
- Trent Loos, Loos Tales Media..... (515) 418-8185

SALE-DAY PHONES:

- Glenn Treftz.....(605) 380-0014
- Lori Brooks.....(785) 410-1899
- Kiley McKinna(402) 350-3447
- Wiley Fanta (320) 287-0751
- Riley Nehlich(605) 290-9668

CONSULTING VETERINARIANS:

- Dr. Tim Kruse, Wetonka Vet Clinic, Wetonka, SD(605) 225-7176

MORTALITY INSURANCE:

- Inquire about mortality insurance at the clerk's desk at the sale

HOTEL ACCOMMODATIONS:

- Ramkota Hotel.....(605) 229-4040
- Hampton Inn.....(605) 262-2600
- Quality Inn.....(605) 277-1402
- Fairfield Inn.....(605) 229-9990

AIRPORT SERVICE:

- Aberdeen Regional Airport(605) 626-7020

****EPDs are dated 1/17/2026****



WELCOME

SELLING 89 HEAD

40 Yearling Bulls

10 Fall Bulls

4 Two Year Olds

4 Fall Cow/Calf pairs

6 Bred Heifers

12 Open Heifers

13 Open F2 Commercial Heifers

SALE CONSULTANT

Kiley McKinna

(402) 350-3447

Wiley Fanta

(320) 287-0751

648 West Sawgrass Trail

Dakota Dunes, SD 57049

mcmarketingsales@aol.com



DEAR FRIENDS AND CATTLEMEN,

It's a pleasure to welcome you once again to the Treftz Limousin "Where Muscle Still Matters" Production Sale. For more than four decades, this program has stood for something very simple—and increasingly rare in today's cattle business: real muscle, real power, and cattle that do exactly what they're built to do.

From the very beginning, Glenn has believed that Limousin cattle should look like Limousin cattle. That belief has never wavered. Generation after generation, intense selection pressure for muscle, structural integrity, and performance has shaped a cow herd and sire battery that remain instantly recognizable. These bulls are bred with purpose—to add pounds, shape, and value where it matters most.

What makes this program special isn't just the cattle—it's the consistency behind them. Many of the females in production today trace back to Glenn's original cow families, a testament to longevity, fertility, and maternal function. That same philosophy carries through the bulls offered each year: powerful, rugged, and built for long-term use in both seedstock and commercial environments.

Glenn has always listened closely to his customers, and this offering reflects exactly what they continue to demand—Limousin muscle that works. The cattle you'll evaluate today represent decades of commitment to a product Glenn believes in wholeheartedly, and one he proudly stands behind.

We invite you to study the offering, ask questions, and be part of a sale that has become a benchmark for the spring bull season. Whether you're a longtime supporter or new to the program, we appreciate your interest and your trust.

We look forward to seeing you on sale day!

Sincerely,

KILEY MCKINNA



A WORD FROM US

DEAR FRIENDS AND CATTLEMEN,

Welcome to our annual Where Muscle Still Matters production sale.

We are in an industry where we have a lot to be thankful for and there is a ton of enthusiasm going forward. Technology has arrived where cattle with Red Meat Yield (RMY) are going to be the name of the game. Treftz Limousin bulls fit these criteria perfectly when it comes to rib-eye size, muscle, yield, and efficiency. On top of that, many of our bulls carry both copies of the F94L myostatin gene which is also a muscle and tenderness indicator.

I hope you enjoy our catalog. It is a labor of love, work, and our unwavering passion for Limousin cattle for over 40 years. We have listened to you, our customers, as to the kind of cattle you want us to produce. The following several pages are a testament to that commitment to you and the breed. Our success is totally reliant on yours.

Our pasture is our show ring. The bulls are weaned and within a week are back out on pasture for development and conditioning. They are not pampered, have never been near a show halter, or special show feed. We don't have any trophies or banners hanging in our barn or any blowers to fluff hair. What you see, is what you get, and what you get are seedstock meant to go from our ranch to yours, get the job done and maintain their condition doing it. From many of the reports we continue to receive, they are getting that job accomplished.

Our cowherd is rigorously fined tuned annually for performance of their calf, disposition, or lack of muscle. Because of those strict standards, only two purebred bull calves were steered in 2025. One had navel infection early in life and the other didn't "meat" the muscle required to stay intact. Good cattle make you money, the rest cost you. In today's world of high costs, one cannot be in the business of mediocrity.

If there's anything you want to know about an individual animal in the sale, reach out to me prior to the sale. I breed them, calve them, feed them, picture, and video them. I can give you my honest view on each animal, good or bad. For an objective opinion, reach out to Kiley or our sale management team and they can help you out as well. Our sale day might not coincide with the day you have the funds. If this is the case, reach out to us a few days prior to the sale so we can work out something that works for you to get your animal purchased.

We stress that if you buy any bred heifers, they need to be moved on sale day or soon after as some are close to calving. Outside of the yearling bulls, we would like to move out the rest of the sale cattle as soon as possible as well.

We are very proud and excited to present the rewards of this year's hard work. Countless man hours are clocked for sale preparation. Pictures tell you something, videos tell you more, but viewing them in person tells you everything. Join us on February 14, the one opportunity of the year to invest in our genetics. When the ship's in the dock, board it.

Sincerely,

Glenn Treftz



The Treftz Family offers our heartfelt thanks. This success would not be possible without your continued support.



NATIONAL RECOGNITION

Treftz Limousin was announced as the North American Limousin Foundation's 2025 Seedstock Producer of the year. Below is the introduction written and given by Chisum Peterson (*adapted and inspired by Amanda Radke's feature story in Limousin 365*)...

Glenn purchased his first Limousin bull and (13) 3/8 blood Limousin cows in 1983. Treftz recalls his start in the breed and said, "When we brought that first Limousin bull home and put him in the pen with those Angus and Hereford bulls we had been using on our commercial cows, he did look pretty exotic. He was like a whole different animal species. But those first calves were an amazing cross; they were everything I had hoped they would be. I've been hooked on the breed ever since." And the rest is history.

From the very beginning, Treftz has always placed intense selection pressure on heavy muscled cattle. Sires like ROMN Justice, Jim Dandie, JYF Yieldmaster, Richmond Xander, TREF Zeus, ROMN Tow Truck, TREF Done Right, TREF Hardcore and others, have helped him achieve his breeding goals.

Along with the bulls that built Treftz Limousin, most of his herd of 150 registered Limousin females goes back to the original group he bought in the 1980s. With the TZ brand on their hip, Glenn is proud of his cow families and in recent years has grown his embryo transplant program to propagate his best genetics on both the bull and female sides. "As producers, we often find ourselves talking about the carcass traits and feed efficiency of the Limousin breed, but where we shine is in our cows' longevity and fertility. A good Limousin female is maternal, docile, good milking with easy-fleshing ability, and I think she can compete with any other breed!"

Glenn sold bulls privately, off the farm, for just over 20 years, prior to hosting an annual production sale. 2026 will mark Glenn's 35th year selling Limousin bulls. From the beginning, Treftz Limousin's annual production sale has been titled "Where Muscle Still Matters Production Sale." It's not just a slogan, or something catchy for an ad or catalog cover - it is what they believe, eat, sleep, and drink at Treftz Limousin. "At a time where all breeds of cattle are starting to look alike, my slogan, 'where muscle still matters,' has even more meaning to me now," said Treftz. "I'm going to keep doing what works and continue to respond to what my customers are telling me they want, and what they want is Limousin muscle."

And listen to his customers...he does! In his own words... "Develop a product you are passionate about. Commit to your product. Market your product. Stand behind your product. And most important, believe in your product." Glenn could write a book on marketing and merchandising registered seedstock. From his website, active social media presence, bi-annual newsletter, ranch tours at home, going "on tour" every late summer/fall, and hours on the phone, Glenn is in tune with his customer's needs, wants and expectations. Sale day is 365 days a year at Treftz Limousin. Glenn has an infectious love and passion for Limousin cattle. He will tell you more than anything, he loves talking with someone considering Limousin genetics for the first time. Whether a customer has five cows or 500, he gives his time to everyone who makes contact, whether a fellow Limousin breeder, a commercial producer or a young person interested in Limousin. Whether new to the breed, or new to Treftz Limousin, once you've spent a little time with Glenn Treftz, you are hooked. In service to the breed, Glenn served nine years on the South Dakota Limousin Association board, with four years as the SDLA president. He also served for six years on the Heartland Limousin Association board.

In recent years, Treftz has been experimenting on purchased commercial F1 black-baldie heifers and crossing them back to Limousin bulls, to remind him of his start in the breed. These baldie cows are now the foundation of the recipient cowherd for the embryo program. "It brings me back to the beginning and is really a strong testament to show my customers about what these bulls can offer their commercial cattle," said Glenn. This "experiment" has grown from 20 head to keep for himself, to developing 50 F1 baldie heifers and to Treftz bulls and offering them for sale. The first year he offered bred F1s, it was by late-night Facebook post of what he had, and to "direct message" him for details and price. The cattle were sold in less than two hours. This demand has led Glenn to offering these females on a special bred female sale each December. A little over a month ago, the top draft of his F1 baldies sold for \$5400/head - the HIGHEST priced commercial bred heifers ever sold at Aberdeen Livestock! Always one to lead by example, he backs up his claims to his customers by showing what is possible with Limousin & Limi cross genetics.

The second Saturday in February is a day I-and many others-look forward to each year. Some come for the accordion music, a few come for the chicken feet, but everyone comes to see stout, powerful Limousin bulls with all the muscle you can pack on a set of cattle. They also come to support the man who's spent his entire life devoted to Limousin cattle and the customers he serves. His sale has become the benchmark for the spring bull sale season. Cattle and genetics are sold across the US, Canada and other countries across the globe. Capacity crowds, exuberant bidding and strong sale averages create an event people go home from excited for what the future holds. A culmination of over 40 years of work, dedication and service to the breed and his customers.

Glenn would be the first to admit, none of these above-mentioned things would be possible without the love and support from his family, including Lori, and their kids Dustin, Courtney (Andrew) and Reece (Alayna). And, I certainly want to mention his pride and joy and the ones who call him "Papa", Mila, Colton, and Arie.

Before I introduce Glenn, I'll leave you with a statement mentioned earlier-in Glenn's own words-and let it be a lesson for all of us... "Develop a product you are passionate about. Commit to your product. Market your product. Stand behind your product. And most important, believe in your product."

-Chisum Peterson's introduction at the NALF annual meeting during the National Western Stock Show in Denver, CO

CONGRATULATIONS ON BEING NAMED THE
2025 NALF SEEDSTOCK
PRODUCER OF THE YEAR
TREFTZ LIMOUSIN



THE CROP

The 18-month-old and two-year-old bulls are virgin bulls and will be fertility and trich tested prior to the sale. They have been on *Purina Accuration* and corn at a level of 25/75, free choice prairie hay, and a complete mineral program.

The yearling bulls are also on the same level of *Purina Accuration*, prairie hay, and mineral program. They were weaned in a small lot on October 12 and put back out to a small pasture on October 17 where they have been until shortly before sale day. No silage is used in any of the bull rations.

The bulls will be fertility tested and will have been vaccinated with Bovi-shield Gold FP5/VL5, anthrax and twice for pinkeye and foot rot prevention. Please let us know prior to delivery if there are required vaccinations for your area of the country that are important to you. We also pour the bulls monthly with different products to keep ahead of lice and rubbing issues. Several of the top end bulls have been tested for the F94L Myostatin gene and the results are added in the footnotes.

Many of the bulls have been tested for the Homo polled and Homo black genes with the results listed on the pedigree of each bull.

We will keep the yearling bulls free of charge until April 1. After a satisfactory fertility exam, we will deliver the bulls with no cost to you up to 150 miles. Beyond that, we will work with you in getting your bulls delivered to an agreed upon central point. Please bring your trailer the day of the sale if you are thinking about purchasing a two-year-old bull, fall bull or any of the females as we would like to move them as soon as possible right after the sale. We will deduct \$50 for each bull taken home sale day. A veterinarian will be on hand to issue health papers where needed. A supplement sheet will be available online and sale day with adjusted yearling weights, scrotal measurements, and ultrasound data. Be sure to go to our website www.treftzlimousin.com or www.dvauction.com for updated pictures, videos and other data. Again this year, we are including a calving-ease score based on a combination of pedigree, EPDs, and calving history from sire and dam.

E - Recommended for cows only

EE - Should work on cows or heifers

EEE - A good choice for breeding heifers



GENETIC OPPORTUNITY

TREF MAGNUM 688M

LOT A

PEDIGREE AND STATS

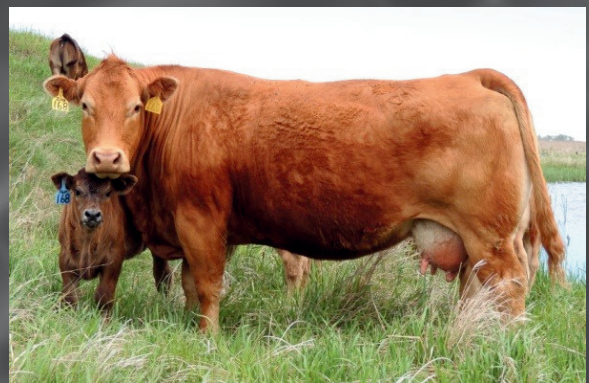
Here's an opportunity to invest in arguably as exciting as anything we've ever made at Treftz Limousin. TREF Magnum 688M was our choice of 5 very popular full ET brothers we retained to walk our pastures with the rest averaging \$11,000 at our 2025 sale.



Besides his pedigree, his 100/90.3% genetic makeup, and his tremendous eye appeal, Magnum is "that one" and very unique bull, with the rare combination of being a terminal sire ranking high in performance, yield, and rib-eye (20.3 sq in) while still being a maternal influencer with incredible milk, docility, scrotal, softness, and soundness on foot. Get acquainted with his name as you will see a lot of it in the future in our program.



Sire: Anchor B Gold Rush 48G



Dam: TREF Chardoney 168C

Selling semen packages 15 units for \$1000

Semen rights also available and qualified for Canada and Australia.

Contact us or MC Marketing to get on the list. Limited semen available . No other semen will be sold in 2026



YEARLING BULLS



LOT 1

LOT 1: There's no doubt heavy weights come with body length which elevates him to the number one spot for weaning, both actual and adjusted. He's been a looker since he arrived and has caught the attention of every visitor this summer. Just like his sire Hardcore, he has the phenotype, the performance, the power, and the presence. Whether you're a purebred breeder or commercial oriented, imagine making him the face of your program! His full brother also made the first pen in our 2025 sale and his full sister from 2024 is already making a big hit. Kid proof disposition. 11 EPDs in the top 10%.
F94L MYOSTATIN 2 CALVING EASE E

1 TREF NAUTILUS 635N

PUREBRED (100/86.9) BULL - HOMO POLLED - RED
 03/05/25 - TREF 635N - NPM3376945

GE-EPDS

	CE	BW	WW	YW	MK	TM	CM	SC	DC	YG	CW	RE	MB	\$TPI
EPDS	3	4.7	83	140	34	77	2	0.3	13	-0.56	67	1.59	-0.38	153.13
% RANK	>95	>95	3	2	2	1	>95	80	55	10	1	1	>95	2

ACT BW	ADJ WW
101	845

TOMV DIESEL 619 D
TREF HARDCORE 204H
 TREF DELANEY 204D
 J BAR J EXCLUSIVE 704E ET
TREF HABANERO 635H
 TREF FRANCINE 471F

GV AUSTIN 701A
 MISS TOM 118Y
 JYF YELDMASTER 80Y
 TREF TREASURE 304T
 WULFS CLAIM K817C ET
 LIMOLYN XILDA
 COLE DAZZLE 74D
 TREF BLESSED 071B



Lot 1 pictured in June



LOT 2

LOT 2: Breeder alert! We were lucky enough to gain spring breeding possession of TREF Kansas last breeding season and wow did he nail it on this stout herd sire prospect. Here's another bull with incredible length and style to burn and rounds it out with a nice hindquarter. He weaned at almost 800 lbs of raw power with no waste. He could really muscle up a herd of angus cows. His dam is a beautiful and feminine made cow with a near perfect udder. 11 EPDs in the top 25%.
F94L MYOSTATIN 2 CALVING EASE: E

2 TREF NIGHT HAWK 521N

PUREBRED (100/89.4) BULL - HOMO POLLED - BLACK
 02/26/25 - TREF 521N - NPM3377013

GE-EPDS

	CE	BW	WW	YW	MK	TM	CM	SC	DC	YG	CW	RE	MB	\$TPI
EPDS	5	2.7	68	100	28	62	7	0.33	12	-0.62	46	1.47	-0.36	132.5
% RANK	95	80	40	45	20	25	35	80	70	3	15	2	>95	20

ACT BW	ADJ WW
99	798

WULFS HANDIWORK T027H
TREF KANSAS 1607K ET
 TREF BASIL 012B
 TREF DIESEL 619D
TREF GODDESS 521G
 TREF BUTTERFLY 066B

LFLC DENVER 857D
 TECS DELUX 1644D
 RUNL STETSON 850S
 TREF YELLOW JELLO 712Y
 GV AUSTIN 701A
 MISS TOM 118Y
 RICHMOND XANDER 22X
 TREF PETTE 065P



Lot 2 pictured in September

YEARLING BULLS



LOT 3: Here's another herdsire prospect with a great future. His dam is a big volume, dark cherry red Paynes Cracker ET daughter out of the first cow we flushed years ago, TREF Yakira 766Y. He's backed by generations of Who's Who sires that built our program making him very predictable. Don't get overly concerned with the birth weights on the Hardcore's. His calves are super long bodied and come easy out of mature cows. We haven't assisted cows and don't expect our customers to either. 15 EPDs in the top 20%.
F94L MYOSTATIN 2 CALVING EASE: E

3 TREF NORTON 661N GE-EPDs

PUREBRED (100/88.8) BULL - HOMO POLLED - RED
 03/21/25 - TREF 661N - NPM3376978

	CE	BW	WW	YW	MK	TM	CM	SC	DC	YG	CW	RE	MB	\$TPI
EPDS	2	3.1	77	123	32	71	1	0.65	16	-0.44	55	1.19	-0.19	138.2
% RANK	>95	85	15	10	5	3	>95	35	10	40	2	15	65	10

TOMV DIESEL 619 D
TREF HARDCORE 204H
 TREF DELANEY 204D
 RPY PAYNES CRACKER 17E
TREF HONEY BEE 661H ET
 TREF YAKIRA 766Y

GV AUSTIN 701A
 MISS TOM 118Y
 JYF YIELDMASTER 80Y
 TREF TREASURE 304T
 COLE ARCHITECT 08A
 EDW BEACH BODY
 ROMN TOW TRUCK 111T
 TREF SASHA 266S



Lot 3 Dam



LOT 4: Get on the Night Train! Homo Black, Homo Polled, and Homo Awesome. Mating the power and ruggedness of Richmond Fantom with the style and phenotype of the Diesel and Jim Dandie daughters was almost always a hit and this bull is no exception. Check out his genetic makeup, 100/92.6%. Bulls of this purity will really make an impact in the heterosis department, I guarantee it. 10 EPDs in the top 25%. **F94L MYOSTATIN 2 CALVING EASE: E**

4 TREF NIGHT TRAIN 523N GE-EPDs

PUREBRED (100/92.6) BULL - HOMO POLLED - HOMO BLACK
 03/07/25 - TREF 523N - NPM3376954

	CE	BW	WW	YW	MK	TM	CM	SC	DC	YG	CW	RE	MB	\$TPI
EPDS	7	4.7	66	104	30	63	4	0.3	10	-0.56	44	1.32	-0.47	117.6
% RANK	80	>95	50	40	15	20	85	80	80	10	20	10	>95	35

RICHMOND CRUSADER SRD 53C
RICHMOND FANTOM SRD 102F
 RICHMOND BLUSH SRD 93D
 TOMV DIESEL 619D
TREF GENECE 523G
 TREF BREEZE 051B

RICHMOND ZODIAC SRD 29Z
 RICHMOND ZANDY SRD 49Z
 RICHMOND BLACKOUT SRD 10B
 RICHMOND BLUSH SRD 178B
 GV AUSTIN 701A
 MISS TOM 118Y
 CF JIM DANDIE 216U
 TREF WHITE WINE 551W



Lot 4 Sire



YEARLING BULLS



LOT 5: This bull would have probably started the sale if he had a higher registered Limousin percentage but don't count him out as his great grand dam was a commercial unregistered Limousin cow so he possesses the same percentage as the rest of the offering. His dam is a Coal Train daughter and wow do they raise the calves. His full brother was very popular in our 2025 sale and went home to the Stern family in Garden City, SD. 13 EPDs in the top 25%.
F94L MYOSTATIN 2 CALVING EASE: E

5 TREF NORFOLK 575N GE-EPDs

PERCENTAGE (85/79.5) BULL - HOMO POLLED - RED
 03/12/25 - TREF 575M - NXM3376963

	CE	BW	WW	YW	MK	TM	CM	SC	DC	YG	CW	RE	MB	STPI
EPDS	4	4	76	117	32	70	4	0.4	15	-0.48	40	1.3	-0.32	109.7
% RANK	>95	>95	15	15	3	4	90	80	10	10	50	3	>95	65

TOMV DIESEL 619 D
TREF HARDCORE 204H
 TREF DELANEY 204D
 TREF COAL TRAIN 707C
TREF GLITTER 575G
 TREF ZOEY 875Z

GV AUSTIN 701A
 MISS TOM 118Y
 JYF YELDMASTER 80Y
 TREF TREASURE 304T
 RPY PAYNES DERBY 46Z
 TREF YESTERDAY 707Y
 JBV LOMBARDI 911W
 TREF 475 (?)



Lot 5 Full Brother



LOT 6: Night Rider is a result of another mating of Fantom on Diesel that really clicked. His full brothers on our 2024 and 2025 sales were highly sought after selling to Austin Bauer and Wayne Bollinger, respectively. His dam is a prolific cornerstone of our herd and is expecting her second set of twins, this time to our upcoming phenomenon, TREF Magnum. As with many of the sale bulls, pedigrees are stacked for maternal traits leaving no guessing when keeping replacements. 10 EPDs in the top 25%.

F94L MYOSTATIN 2 CALVING EASE: E

6 TREF NIGHT RIDER 525N GE-EPDs

PUREBRED (100/91.4) BULL - HOMO POLLED - BLACK
 03/16/24 - TREF 525N - NPM3376965

	CE	BW	WW	YW	MK	TM	CM	SC	DC	YG	CW	RE	MB	STPI
EPDS	6	3.6	63	107	30	61	4	0.6	11	-0.48	42	1.2	-0.26	121.3
% RANK	90	90	60	35	15	30	85	35	75	30	25	15	85	30

RICHMOND CRUSADER SRD 53C
RICHMOND FANTOM SRD 102F
 RICHMOND BLUSH SRD 93D
 TOMV DIESEL 619D
TREF GRACE 525G
 TREF CUPCAKE 125C

RICHMOND ZODIAC SRD 29Z
 RICHMOND ZANDY SRD 49Z
 RICHMOND BLACKOUT SRD 10B
 RICHMOND BLUSH SRD 178B
 GV AUSTIN 701A
 MISS TOM 118Y
 WULFS AMAZING BULL T341A
 TREF YELLOW FLOWER 725Y



Lot 6 Dam

YEARLING BULLS



LOT 7

LOT 7: Notice a pattern? The first pen is usually loaded with Hardcore sons, for many reasons. One of them obviously for the power they possess. Neptune is a bit more on the moderate side and the 8th natural calve out of our donor cow, TREF Chardoney, featured as the dam of TREF Magnum in Lot A. Her sons and full sibs to Magnum were a feature in our 2025 sale selling to prominent commercial herds and averaging \$11,000. 14 EPDs in the top 25%.
F94L MYOSTATIN 2 CALVING EASE: E

7

TREF NEPTUNE 168N

GE-EPDs

PUREBRED (100/88.6) BULL - HET POLLED - RED
 03/25/25 - TREF 168N - NPM3376983

ACT BW 93
 ADJ WW 779

	CE	BW	WW	YW	MK	TM	CM	SC	DC	YG	CW	RE	MB	STPI
EPDS	6	4.4	77	121	34	73	4	0.7	10	-0.65	44	1.52	-0.31	126.3
% RANK	90	95	15	15	2	2	85	30	80	1	20	1	95	25

TOMV DIESEL 619 D
TREF HARDCORE 204H
 TREF DELANEY 204D
 ROMN ZINGRAY 125Z
TREF CHARDONEY 168C
 TREF YOGURT 765Y

GV AUSTIN 701A
 MISS TOM 118Y
 JYF YELDMASTER 80Y
 TREF TREASURE 304T

WULFS WAGON TRAIN 3197W
 ROMN RAZZLE DAZZLE 10R
 DVCL MR UNBELIEVABLE U03
 TREF 565J



Lot 7 Dam



LOT 8

LOT 8: Trying to produce some outcross genetics, we purchased and flushed a heifer we bought from Boulder Land and Cattle in Canada to Wulfs Kactus. Nashville was the only bull in that mating but definitely one worthy of respect. Super stout with plenty of depth of body and in an easy fleshing package. Here's another high percentage bull that will really create a bang whether in a purebred or commercial outfit. 10 EPDs in the top 25%.
F94L MYOSTATIN 2 CALVING EASE: E

8

TREF NASHVILLE 2159N

GE-EPDs

PUREBRED (100/90.1) BULL - HOMO POLLED - RED
 03/01/25 - TREF 2159N ET - NPM3392938

ACT BW 95
 ADJ WW 674

	CE	BW	WW	YW	MK	TM	CM	SC	DC	YG	CW	RE	MB	STPI
EPDS	4	3	79	116	30	69	3	1.09	13	-0.47	26	1.01	-0.32	69.13
% RANK	95	85	10	20	15	5	95	10	55	35	65	50	95	>95

WULFS HORTON 7358H
WULFS KACTUS 4841K
 WULFS BESAME MUCHO 4841B
 RICHMOND GRID IRON SRD 171G
BLCC K6 MISS SIX COW
 GREENWOOD MISS PYN 6D

HUNT CREDENTIALS 37C ET
 WULFS ENCARNATION 7358E
 WULFS XTRACTOR X233X
 WULFS YET IT'S TRUE 1401Y

RICHMOND GRAND DUKE SRD 8D
 RICHMOND BIG MISCHIEF SRD 189B
 B BAR COGNAC 1B
 GREENWOOD PLD WYLEE



Lot 8 Sire



YEARLING BULLS



LOT 9: Another flush on the K6 Miss Six heifer was a mating to RUNL Justified. This guy really impressed us with his rate of growth and soundness in his structure. For those who have been buying our genetics for years, here's a fresh bloodline for you. 10 EPDs in the top 25%.
F94L MYOSTATIN 1 CALVING EASE: E

9 TREF NIGHTFALL 1601N GE-EPDs

PUREBRED (100/90.3) BULL - HOMO POLLED - BLACK
 02/22/25 - TREF 1601N - NPM3392942

	CE	BW	WW	YW	MK	TM	CM	SC	DC	YG	CW	RE	MB	\$TPI
EPDS	15	1.4	77	116	25	63	9	0.84	14	-0.41	41	1.09	-0.25	111.1
% RANK	15	55	15	20	50	20	10	32	40	55	25	30	80	50

- RUNL RIALTO 135R
- RUNL JUSTIFIED 364 J**
- RUNL EVENING GLOW 205 E
- RICHMOND GRID IRON SRD 171G
- BLCC K6 MISS SIX COW**
- GREENWOOD MISS PYN 6D
- JCL LODESTAR 27L
- RUNL 782N
- AHCC BADLANDS 908B
- RUNL BLYSSE 106 B
- RICHMOND GRAND DUKE SRD 8D
- RICHMOND BIG MISCHIEF SRD 189B
- B BAR COGNAC 1B
- GREENWOOD PLD WYLEE



Lot 9 and 10 Sire



LOT 10: Another flush to RUNL Justified but this time to one of our very finest TOMV Diesel daughters. Here again, he shows only percentage on paper because of his commercial Limousin great granddam but with the fullblood Jim Dandie is his pedigree on that same maternal side, he is actually higher in actual percentage than many of his herd mates. If you're looking for a couple of black bulls with a fresh twist and very like in kind, Lots 9 and 10 could be your ticket. 14 EPDs in the top 25%.
F94L MYOSTATIN 1 CALVING EASE: E

10 TREF NITRO 2143N GE-EPDs

PUREBRED (87/79.5) BULL - HOMO POLLED - BLACK
 02/21/25 - TREF 2143N - NPM3392943

	CE	BW	WW	YW	MK	TM	CM	SC	DC	YG	CW	RE	MB	\$TPI
EPDS	4	3.6	85	133	22	65	6	0.25	11	-0.39	65	1.21	-0.02	171.1
% RANK	95	90	3	4	80	15	55	85	75	60	1	15	25	1

- RUNL RIALTO 135R
- RUNL JUSTIFIED 364 J**
- RUNL EVENING GLOW 205 E
- TOMV DIESEL 619D
- TREF JOSIE 710J**
- TREF BRYNN 075B
- GJCL LODESTAR 27L
- RUNL 782N
- AHCC BADLANDS 908B
- RUNL BLYSSE 106 B
- GV AUSTIN 701A
- MISS TOM 118Y
- CF JIM DANDIE 216U
- TREF 475



Lot 10 Dam



YEARLING BULLS



LOT 11: Big powerful bull with a ton of mass, growth, and predictability. His dam is a natural daughter of our very prolific egg producing donor, TREF Cassie 177C, and consistently brings in the top level sons to the sale. Her son, TREF Lone Ranger, topped our 2024 sale for \$19,500 to Symens Brothers and her son in our last sale sold to Jason Jochim for \$12,000. Her weaning ratio on her 5 calves is 109. 12 EPDs in the top 25% with 6 of those being in the top 1%!
F94L MYOSTATIN 2 CALVING EASE: E

11

TREF NOBLEMAN 577N

PUREBRED (94/85.5) BULL - HOMO POLLED - RED
03/03/25 - TREF 577N - NPM3376942

GE-EPDs

ACT BW 107
ADJ WW 823

	CE	BW	WW	YW	MK	TM	CM	SC	DC	YG	CW	RE	MB	\$TPI
EPDS	2	6.3	95	152	32	79	3	0.6	12	-0.46	65	1.52	-0.3	140.7
% RANK	>95	>95	1	1	5	1	95	35	70	35	1	1	90	10

TOMV DIESEL 619 D
TREF HARDCORE 204H

TREF DELANEY 204D

COLE DAZZLE 74 D

TREF GEMMA 577G

TREF CASSIE 177C

GV AUSTIN 701A
MISS TOM 118Y
JYF YIELDMASTER 80Y
TREF TREASURE 304T

COLE ARCHITECT 08A
COLE MISS NASA 006X
TREF ZEUS 232Z
TREF ZOPHIE 841Z



Lot 11 pictured in June



LOT 12: And yet another big numbered Hardcore son that's got the ability to add some serious pounds for his new owner. If you are into performance, these Hardcore sons are hard to top and will really make an impact on their calves. 9 EPDs in the top 20%.
F94L MYOSTATIN 2 CALVING EASE: E

12

TREF NETWORK 553N

PUREBRED (94/100/88.8) BULL - HET POLLED - RED
03/07/25 - TREF 553N - NPM3376952

GE-EPDs

ACT BW 95
ADJ WW 726

	CE	BW	WW	YW	MK	TM	CM	SC	DC	YG	CW	RE	MB	\$TPI
EPDS	10	4.4	87	145	28	72	4	0.45	13	-0.47	38	1.2	-0.4	101.1
% RANK	55	95	2	1	20	3	85	65	55	35	35	15	>95	65

TOMV DIESEL 619 D
TREF HARDCORE 204H

TREF DELANEY 204D

WULFS CAPER 3303C

TREF GLAMOUR GIRL 553G

TREF ABILENE 911A

GV AUSTIN 701A
MISS TOM 118Y
JYF YIELDMASTER 80Y
TREF TREASURE 304T

KORC WULFS SNOW PRINCE
WULFS ARMADA 3303A
VL YES MAN 111Y
TREF TONI 311T



Lot 12 Maternal Brother (2024)



YEARLING BULLS



13 TREF NIGHT STICK 502N

PUREBRED (93/87) BULL - HOMO POLLED - HOMO BLACK
03/11/25 - TREF 502N - NPM3377020

	CE	BW	WW	YW	MK	TM	CM	SC	DC	YG	CW	RE	MB	\$TPI
EPDS	10	1.5	62	86	22	53	7	0.75	14	-0.54	21	1.07	-0.35	88.26
% RANK	55	55	60	75	80	75	35	30	40	15	80	35	95	85

ACT BW
91
ADJ WW
677

WULFS HANDIWORK T027H
TREF KANSAS 1607K ET
TREF BASIL 012B

LFLC DENVER 857D
TECS DELUX 1644D
RUNL STETSON 8505Y
TREF YELLOW JELLO 712Y

WULFS CAPER 3303C
TREF GLORY 502G
TREF DARK CHOCOLATE 205D

KORC WULFS SNOW PRINCE
WULFS ARMADA 3303A
VL VES MAN 111Y
TREF SOPHISICATION 207S

LOT 13: If you are looking for your calves to be all polled, all black, and all with a classy look, this Kansas son will fit the bill. The Kansas calves have really impressed us with their moderate birth weights and clean sassy looks.

CALVING EASE: E



Lot 13 as a Calf



Lot 13 Dam

TREFTZ LIMOUSIN

"Where Muscle Still Matters"

We understand most of our customers want to take as many pounds to the sale barn as possible. With that in mind, we make a concentrated effort to breed for pounds and performance. The key to producing those pounds is increased muscling. Our ultrasound results over the last 14 years illustrate our selection pressure for muscling is paying dividends.

YEAR	REA
2012	15.5
2013	16.9
2014	16.4
2015	16.4
2016	16.2
2017	16.1
2018	16.5
2019	15.9
2020	16.1
2021	16.2
2022	16.4
2023	16.3
2024	16.1
2025	16
Average	16



YEARLING BULLS

14

TREF NIKE 923N

PUREBRED (100/89.2) BULL - HOMO POLLED - RED
03/16/25 - TREF 923N - NPM3376973

WULFS FIFTY T804F
JBV MILESTONE 206K
JBV BUBBLES 702D

LFLC BANK ACCOUNT 701B
TECS DANTEAN 1629D
HUNT CREDENTIALS 37C ET
JBV GENESIS 110Y

RICHMOND FANTOM SRD 102F
TREF LOTTIE 923L
TREF YELLOW JELLO 712Y

RICHMOND CRUSADER SRD 53C
RICHMOND BLUSH SRD 93D
LVLS TOP CRITERIA 8862P
TREF WISHBONE 512W

ACT BW
92
ADJ WW
741

	CE	BW	WW	YW	MK	TM	CM	SC	DC	YG	CW	RE	MB	\$TPI
EPDS	5	2.9	67	98	29	62	2	0.42	4	-0.46	26	0.95	-0.42	-0.35
% RANK	95	80	45	50	15	25	>95	65	>95	35	65	60	>95	30

LOT 14: Here's a bull that drew considerable excitement with visitors this fall. He's deep in the flank, wide across the top, very easy fleshing, and walks on a big sound foot. His first calf mother did a heck of a job as a first calf heifer.

CALVING EASE: E



15

TREF NEMO 906N

PUREBRED (100/93.5) BULL - HOMO POLLED - HOMO BLACK
02/21/2025 - TREF 906N - NPM3376992

BALAMORE ENDEAVOR 701E
BALAMORE HERSHEY 0120H
CLARKS EXTRAVAGANT KISS

RLF YARDLEY 601Y
CLARKS AFFECTIVE KISS
CLARKS BLOCKBUSTER
DKC UNFORGETTABLE KISS

GE-EPDS

RICHMOND FANTOM SRD 102F
TREF LADY LOVE 906L ET
AR HOOPLA FLO 090H

RICHMOND CRUSADER SRD 53C
RICHMOND BLUSH SRD 93D
AR EXECUTIVE 7173E
AR BOUNCY FLO 483B

ACT BW
70
ADJ WW
698

	CE	BW	WW	YW	MK	TM	CM	SC	DC	YG	CW	RE	MB	\$TPI
EPDS	16	0.1	56	88	27	55	8	0.28	14	-0.52	26	1.06	-0.41	93.08
% RANK	10	30	80	70	30	65	20	85	40	20	65	35	>95	80

LOT 15: We're starting the heifer bull pen with this homo polled, homo black prospect that has calving ease coupled with big time performance. The pedigree on Nemo goes back to a fullblood on his maternal side making him a very high percentage bull. His dam is a first calf ET heifer we loved for her look and now for her productivity as well.

F94L MYOSTATIN 2 CALVING EASE: EEE



Peeking ahead to the Future

16

TREF NIGHT CRAWLER 883N

PUREBRED (100/89.1) BULL - HOMO POLLED - BLACK
02/28/2025 - TREF 883N - NPM3376937

BALAMORE ENDEAVOR 701E
BALAMORE HERSHEY 0120H
LARKS EXTRAVAGANT KISS

RLF YARDLEY 601Y
CLARKS AFFECTIVE KISS
CLARKS BLOCKBUSTER
DKC UNFORGETTABLE KISS

TREF GUNPOWDER 290G
TREF KANDY KISS 883K
TREF ANNABELLA 922A

SVES EASY GOING 77E
TREF DAKOTA LOVE 290D
RICHMOND XANDER SRD 22X
TREF SENSATIONAL 222S

ACT BW
75
ADJ WW
665

	CE	BW	WW	YW	MK	TM	CM	SC	DC	YG	CW	RE	MB	\$TPI
EPDS	16	-0.9	55	85	25	52	10	0.25	14	-0.56	22	1.14	-0.31	96.76
% RANK	10	15	80	75	50	80	3	85	40	10	75	25	95	70

LOT 16: A double bred calving ease bull that's very moderately built and easy fleshing. His maternal granddam, TREF Annabella 922A, was a cornerstone female for many years, leaving us some very productive daughters.

CALVING EASE: EEE



Feeding our future

17

TREF NIGHT WATCH 770N

PUREBRED (100/88.5) BULL - HOMO POLLED - HET BLACK
03/25/25 - TREF 770N - NPM3377025

WULFS HANDIWORK T027H
TREF KANSAS 1607K ET
TREF BASIL 012B

LFLC DENVER 857D
TECS DELUX 1644D
RUNL STETSON 850S
TREF YELLOW JELLO 712Y

GE-EPDS

TREF GUNPOWDER 290G
TREF JAYCEE 770J
TREF ZOPHIE 841Z

SVES EASY GOING 77E
TREF DAKOTA LOVE 290D
RICHMOND XANDER SRD 22X
TREF TAWNY 341T

ACT BW
71
ADJ WW
706

	CE	BW	WW	YW	MK	TM	CM	SC	DC	YG	CW	RE	MB	\$TPI
EPDS	15	-0.1	56	74	27	55	10	0.6	13	-0.51	13	0.95	-0.58	65.37
% RANK	15	25	80	90	30	65	3	35	55	20	95	60	>95	>95

LOT 17: Here's a calving ease bull out of one of the greats out of our program, TREF Gunpowder. He is also represented on the dam's side by one of our top cows, TREF Zophie 841Z. Lots of predictability here... F94L MYOSTATIN 2 CALVING EASE: EEE

18

TREF NITRITE 507N

PUREBRED (100/87.8) BULL - HOMO POLLED - HOMO BLACK
03/06/25 - TREF 507N - NPM3377018

WULFS HANDIWORK T027H
TREF KANSAS 1607K ET
TREF BASIL 012B

LFLC DENVER 857D
TECS DELUX 1644D
RUNL STETSON 850S
TREF YELLOW JELLO 712Y

GE-EPDS

SVES EASY GOING 77E
TREF GLAMOUR 507G
TREF ASIA 907A

COLE BUSINESSMAN 104B
MISS SVES RANSOM 76X
RUNL STETSON 850S
TREF VESTERDAY 70Y

ACT BW
85
ADJ WW
620

	CE	BW	WW	YW	MK	TM	CM	SC	DC	YG	CW	RE	MB	\$TPI
EPDS	15	-0.3	52	72	22	48	8	0.65	13	-0.49	19	1.02	-0.43	82.43
% RANK	15	25	90	90	80	95	20	35	55	30	85	45	>95	90

LOT 18: With Stetson, User Friendly, and Ransom in his pedigree, he should be a good choice on heifers. To top it off, he's homo polled and homo black.

F94L MYOSTATIN 2 CALVING EASE: EEE



YEARLING BULLS



19 TREF NO MERCY 760N

PUREBRED (93/86.8) BULL - HOMO POLLED - HOMO BLACK
02/24/25 - TREF 760N - NPM3377010

WULFS HANDIWORK T027H
TREF KANSAS 1607K ET
TREF BASIL 012B

LFLC DENVER 857D
TECS DELUX 164HD
RUNL STETSON 850S
TREF YELLOW JELLO 712Y

SYES EASY GOING 77E
TREF JOLLY RANCHER 760J ET
TREF DARK CHOCOLATE 205D

COLE BUSINESSMAN 104B
MISS SYES RANSOM 76X
VL YES MAN 111Y
TREF SOPHISICATION 207S

ACT BW
71
ADJ WW
646

	CE	BW	WW	YW	MK	TM	CM	SC	DC	YG	CW	RE	MB	STPI
EPDS	14	-0.4	56	78	24	52	9	0.6	14	-0.52	18	1.08	-0.32	86.62
% RANK	20	25	80	85	60	80	10	35	40	20	90	35	95	85

LOT 19: Here's a bull with Calving Ease Direct and Birth Weight in the top 10%. With cow numbers the lowest in several decades, breed a group of your heifers to a bull like this and market them. There is great demand for heifers bred to black Limousin bulls.
CALVING EASE: EEE



20 TREF NEVADA 920N

PUREBRED (100/87.1) BULL - HOMO POLLED - RED
03/27/25 - TREF 920N - NPM3376985

WULFS FIFTY T804F
JBV MILESTONE 206K
JBV BUBBLES 702D

LFLC BANK ACCOUNT 701B
TECS DANTEAN 1629D
HUNT CREDENTIALS 37C ET
JBV GENESIS 110Y

TREF HARDCORE 204H
TREF LOVEBUG 920L
TREF FRANCINE 471F

TOMV DIESEL 619 D
TREF DELANEY 204D
COLE DAZZLE 74D
TREF BLESSED 071B

ACT BW
75
ADJ WW
720

	CE	BW	WW	YW	MK	TM	CM	SC	DC	YG	CW	RE	MB	STPI
EPDS	15	0.1	67	101	32	66	9	0.53	15	-0.46	29	1.04	-0.38	96.22
% RANK	15	30	45	45	5	10	10	50	20	35	60	40	>95	75

LOT 20: One has to really appreciate this well balanced bull from the extension and smooth shoulders to the thick hindquarter. He was raised by a tremendous Hardcore heifer bundling up calving ease and growth in one package. Bonus is his calm attitude in the photo pen. 10 EPDs in the top 30%
CALVING EASE: EEE



21 TREF NIGHT WATCHMAN 22N

PUREBRED (100/89.1) BULL - HOMO POLLED - BLACK
03/18/25 - TREF 22N - NPM3376974

BALAMORE ENDEAVOR 701E
BALAMORE HERSHEY 0120H
CLARKS EXTRAVAGANT KISS

RLF YARDLEY 601Y
CLARKS AFFECTIVE KISS
CLARKS BLOCKBUSTER
DKC UNFORGETTABLE KISS

WULFS HYANNIS 4785H
MARTENS LILY 22L ET
ANCHOR B FAWN 13F

WULFS EISENHOWER 3616E
WULFS BEECH TREE 4785B
B BAR AUSTIN HEALY 4D ET
ANCHOR B BEAUTY 2B

ACT BW
68
ADJ WW
663

	CE	BW	WW	YW	MK	TM	CM	SC	DC	YG	CW	RE	MB	STPI
EPDS	16	-1.4	63	95	25	56	10	0.56	13	-0.6	24	1.22	-0.37	96.43
% RANK	10	10	60	60	50	60	3	50	55	4	70	15	>95	70

LOT 21: His dam is a first calf heifer that we imported from Canada a couple years ago for fresh bloodlines. Moderate framed and thick ended. With all 3 calving ease EPDs in the top 10%, he should breed as his name implies...the Night Watchman. If you remember the RUNL Stetson sire from years ago, he is a spitting image.
CALVING EASE: EEE



Whether it's a heifer or bull, muscle is bred on- not fed on



Behind every good bull is a great cow

YEARLING BULLS



LOT 22

22 TREF NIGHTCAP 763N

PUREBRED (93/86.8) BULL - HOMO POLLED - HOMO BLACK
02/26/25 - TREF 763N - NPM3377012

WULFS HANDIWORK T027H
TREF KANSAS 1607K ET
TREF BASIL 012B
SYES EASY GOING 77E
TREF JIFFY 763J ET
TREF DARK CHOCOLATE 205D

LFLC DENVER 857D
TECS DELUX 1644D
RUNL STETSON 850S
TREF YELLOW JELLO 712Y

GE-EPDs

COLE BUSINESSMAN 104B
MISS SYES RANSOM 76X
VL YES MAN 111Y
TREF SOPHISICATION 207S

ACT BW
89
ADJ WW
647

	CE	BW	WW	YW	MK	TM	CM	SC	DC	YG	CW	RE	MB	\$TPI
EPDS	10	0.9	50	70	23	48	7	0.6	14	-0.52	18	1.04	-0.39	77.92
% RANK	55	45	90	95	70	95	35	35	40	20	90	40	>95	95

LOT 22: This guy is easy on the eyes and does a lot of things correctly when looking for a Limousin bull. He is stretchy, smooth in the shoulder, small head, and with the curvature in the rear end. It doesn't hurt to have some of our top matrilarchs in his pedigree. And if black is your thing, he will make them all that way and polled.
F94L MYOSTATIN 2 CALVING EASE: EE



LOT 23

23 TREF NIGHT RANGER 597N

PUREBRED (100/90.7) BULL - HOMO POLLED - BLACK
03/07/25 - TREF 597M - NPM3376955

RICHMOND CRUSADER SRD 53C
RICHMOND FANTOM SRD 102F
RICHMOND BLUSH SRD 93D
WULFS AMAZING BULL T341A
TREF GRETA 597G
TREF ADDISON 997A

RICHMOND ZODIAC SRD 29Z
RICHMOND ZANDY SRD 49Z
RICHMOND BLACKOUT SRD 10B
RICHMOND BLUSH SRD 178B

GE-EPDs

HUNT MR JOCK 44J
WULFS ULTRA DIAMOND 8571U
RICHMOND XANDER SRD 22X
TREF X-QUISTE 634X

ACT BW
94
ADJ WW
700

	CE	BW	WW	YW	MK	TM	CM	SC	DC	YG	CW	RE	MB	\$TPI
EPDS	9	2.5	56	80	30	58	6	0.92	11	-0.45	30	0.93	-0.27	106
% RANK	65	75	80	85	15	50	55	15	75	40	55	65	85	55

LOT 23: Got Milk? This guy certainly does. With Wulfs Amazing bull on the dam side and sired by Fantom, he should leave you with some exciting daughters to build a herd around.
F94L MYOSTATIN 2 CALVING EASE: E

24 TREF NEWSBEAT 658N

PUREBRED (100/91.6) BULL - HOMO POLLED - RED
03/07/25 - TREF 658N - NPM3376953

RICHMOND CRUSADER SRD 53C
RICHMOND FANTOM SRD 102F
RICHMOND BLUSH SRD 93D
TOMV DIESEL 619D
TREF HAYDEN 658H
TREF CHARLOTTE 192C

RICHMOND ZODIAC SRD 29Z
RICHMOND ZANDY SRD 49Z
RICHMOND BLACKOUT SRD 10B
RICHMOND BLUSH SRD 178B

GV AUSTIN 701A
MISS TOM 118Y
RPV PAYNES DERBY 46Z
TREF ZAZU 892Z

ACT BW
86
ADJ WW
750

	CE	BW	WW	YW	MK	TM	CM	SC	DC	YG	CW	RE	MB	\$TPI
EPDS	12	1.8	68	109	30	64	6	0.45	14	-0.41	52	1.11	-0.4	132.6
% RANK	35	60	40	30	15	15	55	65	40	55	4	25	>95	20

LOT 24: This bull is so well rounded in what we look for in a bull. Very high percentage Limousin, homo polled, deep chested, thick made, big weaning weight, and topping it off with an incredible EPD set with 13 in the top 35%. Not every bull can start the sale but he sure could have.
CALVING EASE: EE



LOT 25

25 TREF NIGHTLINE 776N

PUREBRED (100/88.5) BULL - HOMO POLLED - HET BLACK
03/04/25 - TREF 776N - NPM3377017

WULFS HANDIWORK T027H
TREF KANSAS 1607K ET
TREF BASIL 012B
ANCHOR B GOLD RUSH 48G
TREF JOY STICK 776J
TREF FAWN 485F

LFLC DENVER 857D
TECS DELUX 1644D
RUNL STETSON 850S
TREF YELLOW JELLO 712Y

GE-EPDs

B BAR AUSTIN HEALY 4D ET
ANCHOR B BAILEY 21B
WULFS CAPER 3303C
TREF X-POSE 682X

ACT BW
89
ADJ WW
744

	CE	BW	WW	YW	MK	TM	CM	SC	DC	YG	CW	RE	MB	\$TPI
EPDS	10	2.1	67	0.16	27	61	8	0.83	16	-0.52	34	1.18	-0.51	96.92
% RANK	55	70	45	80	30	30	20	20	10	20	45	20	>95	70

LOT 25: Complete made Hershey son that goes back to a standout Anchor B Gold Rush daughter. Deep in his flank and sound in his gait. Great disposition.
F94L MYOSTATIN 2 CALVING EASE: EE



Lot 23 and his Dam at pasture



YEARLING BULLS

26

TREF NIRVANA 843N

PUREBRED (100/89.8) BULL - DB POLLED - RED
03/23/25 - TREF 843N - NPM3376980

TREF EZ STREET 107E
HL EZ MONEY 821H
TREF FRANKIE 420F
TREF GRAND SLAM 111G
TREF KENDALL 843K
TREF BLING 091B

WULFS CAPER 3303C
TREF COCOA BEAN 107C
LFLC BANK ACCOUNT 701B
TREF DUSTY ROSE 220D
TREF COAL TRAIN 707C
TREF CHANEL 111C
CF JIM DANDIE 216U
TREF WATERFALL 591W

ACT BW
88
ADJ WW
693

	CE	BW	WW	YW	MK	TM	CM	SC	DC	YG	CW	RE	MB	\$TPI
EPDS	10	1	53	75	27	54	6	0.49	13	-0.6	23	1.17	-0.32	98.99
% RANK	55	45	85	90	30	70	55	65	55	4	75	20	95	70

LOT 26: Beautifully designed EZ Money son that is out of a young TREF Grand Slam cow. He combines elegance with power in one package.
CALVING EASE: EE



28

TREF NIGHTCLUB 486N

PUREBRED (100/88.4) BULL - HET POLLED - HOMO BLACK
03/04/25 - TREF 486N - NPM3377016

WULFS HANDIWORK T027H
TREF KANSAS 1607K ET
TREF BASIL 012B
WULFS CAPER 3303C
TREF FAITHFUL 486F
TREF APRICOT 986A

LFLC DENVER 857D
TECS DELUX 1644D
RUNL STETSON 850S
TREF YELLOW JELLO 712Y

GE-EPDS
Genetic Evaluation

KORC WULFS SNOW PRINCE
WULFS ARMADA 3303A
RICHMOND XANDER SRD 22X
TREF ROSE 186R

ACT BW
88
ADJ WW
647

	CE	BW	WW	YW	MK	TM	CM	SC	DC	YG	CW	RE	MB	\$TPI
EPDS	9	0.1	58	74	23	52	6	0.65	12	-0.61	15	1.08	-0.49	70.08
% RANK	65	30	75	90	70	80	55	35	70	3	95	35	>95	>95

LOT 28: Long made Kansas son that is very smooth in his design yet round where it matters... the rear end. When we select bulls, we always start from the back and work our way forward. He will make his calves all black.
F94L MYOSTATIN 2 CALVING EASE: EE



Lot 28 pictured in June



27

TREF NATURAL 767N

PUREBRED (100/89.8) BULL - SCURRED - RED
03/18/25 - TREF 767N - NPM3376975

TREF EZ STREET 107E
HL EZ MONEY 821H
TREF FRANKIE 420F
ANCHOR B GOLD RUSH 48G
TREF JITTERBUG 767J
TREF CHARDONEY 168C

WULFS CAPER 3303C
TREF COCOA BEAN 107C
LFLC BANK ACCOUNT 701B
TREF DUSTY ROSE 220D

B BAR AUSTIN HEALY 4D ET
ANCHOR B BAILEY 21B
ROMN ZINGRAY 125Z
TREF YOGURT 765Y

ACT BW
97
ADJ WW
760

	CE	BW	WW	YW	MK	TM	CM	SC	DC	YG	CW	RE	MB	\$TPI
EPDS	4	3.9	76	108	30	68	4	0.89	17	-0.63	39	1.38	-0.41	111.6
% RANK	95	95	20	30	15	10	85	20	5	2	30	4	>95	45

LOT 27: Big volume bull who's maternal granddam is the TREF Chardoney cow pictured in Lot A. His full brother was a big hit in our 2025 sale selling to Rylan Jacob.
CALVING EASE: E



Lot 27 Full Brother



Lot 27 Sire

YEARLING BULLS



29 2201 COMMERCIAL

PERCENTAGE (75%) BULL - HOMO POLLED - RED BALDIE
03/18/25 - TAG 2201

WULFS FIFTY T804F LFLC BANK ACCOUNT 701B
TECS DANTEAN 1629D
JBV MILESTONE 206K HUNT CREDENTIALS 37C ET
JBV BUBBLES 702D JBV GENESIS 110V **BW: 83**
TOMV DIESEL 619D GV AUSTIN 701A **ADJ WW: 702**
50% RED BALDIE (2201) MISS TOM 118Y
HEREFORD/ANGUS COW COMMERCIAL BULL COMMERCIAL COW

LOT 29: This ¾ percentage bull has the muscle and look of a Purebred but with a little dash of white on his face and a lot of flash in his look. He also happens to be my granddaughter Mila's first bull calf to sell.
CALVING EASE: EEE



30 1610 COMMERCIAL

PERCENTAGE (50%) BULL - HOMO POLLED - BLACK BALDIE
03/21/25 - TAG 1610

RICHMOND CRUSADER SRD 53C RICHMOND ZODIAC SRD 29Z
RICHMOND ZANDY SRD 49Z
RICHMOND FANTOM SRD 102F RICHMOND BLACKOUT SRD 10B
RICHMOND BLUSH SRD 178B
TREF DELANEY 204D
HEREFORD BULL **BW: 98**
BLACK BALDIE COW (1610) ANGUS COW **ADJ WW: 672**

LOT 30: Here's a beautiful marked ½ blood baldie bull to use on those high percentage Limousin cows you may have, or better yet, use him on your baldie cows and keep the look but add some stretch and muscle.
CALVING EASE: E



31 2238 COMMERCIAL

PERCENTAGE (50%) BULL - SCURRED - BLACK BALDIE
03/03/25 - TAG 2338

LFLC CHECKING ACCOUNT 701C WULF'S ZIPLOCK N922Z
LFLC 701X XTRA GOOD
WULFS KLOSE KALL T281K WULFS AMAZING BULL T341A
TECS DUCHESS 1625D TECS APPEALING 1354
HEREFORD BULL **BW: 89**
BLACK BALDIE COW (2338) ANGUS COW **ADJ WW: 724**

LOT 31: Big, rugged son with bone and body length that can compliment any kind of cow. Another bull with the best of both worlds – a heavy muscled continental bull on an English cross cow. It doesn't get any better than that whether you're raising terminal cattle or making females. You'll love his facial markings.
CALVING EASE: E



Baldie and her calf at pasture



Badlies pictured at pasture in June



YEARLING BULLS

32

2208 COMMERCIAL

PERCENTAGE (50%) BULL - HOMO POLLED - BLACK BALDIE
03/31/25 - TAG 2208

TREF GUNPOWDER 290G
TREF KAMIKAZE O56K
TREF DAKOTA ROSE 256D

SVES EASY GOING 77E
TREF DAKOTA LOVE 290D
JVF YIELDMASTER 80Y
TREF X-QUISITE 634X

HEREFORD BULL
BLACK BALDIE COW (2338)
ANGUS COW

BW: 80
ADJ WW: 627

LOT 32: If you want a smaller and more refined baldie with no markings on his face, he's your guy. He should work on heifers.
CALVING EASE: EEE



Body length = Big weaning weights

33

TREF NESTLE 755N

PUREBRED (100/90.3) BULL - HOMO POLLED - HET BLACK
03/09/25 - TREF 755N - NPM3377019

RICHMOND CRUSADER SRD 53C
RICHMOND FANTOM SRD 102F
RICHMOND BLUSH SRD 93D

RICHMOND ZODIAC SRD 29Z
RICHMOND ZANDY SRD 49Z
RICHMOND BLACKOUT SRD 10B
RICHMOND BLUSH SRD 178B

GE-EPDS

TOMV DIESEL 619D
TREF JAVA 755J ET
TREF YESTERDAY 707Y

GV AUSTIN 701A
MISS TOM 118Y
SVES USER FRIENDLY 524U
TREF WANDA 507W

ACT BW
100
ADJ WW
711

	CE	BW	WW	YW	MK	TM	CM	SC	DC	YG	CW	RE	MB	\$TPI
EPDS	6	4.4	67	109	31	64	2	0.55	15	-0.3	55	0.96	-0.4	127.2
% RANK	90	95	45	30	10	15	>95	50	20	85	2	60	>95	25

LOT 33: This will be our last crop of Fantom bulls so grab one while you can. His pedigree goes back to the very prolific TREF Sophistication cow. These high percentage bulls bring a lot of heterosis to the game.
F94L MYOSTATIN 1 CALVING EASE: E



Our pasture is our show ring

34

TREF NIGHT VISION 885N

PUREBRED (100/89.3) BULL - HOMO POLLED - HOMO BLACK
03/19/25 - TREF 885N - NPM3376976

BALAMORE ENDEAVOR 701E
BALAMORE HERSHEY 0120H
CLARKS EXTRAVAGANT KISS

RLF YARDLEY 601Y
CLARKS AFFECTIVE KISS
CLARKS BLOCKBUSTER
DKC UNFORGETTABLE KISS

GE-EPDS

TREF GUNPOWDER 290G
TREF KATIE 885K
TREF APRICOT 986A

SVES EASY GOING 77E
TREF DAKOTA LOVE 290D
RICHMOND XANDER SRD 22X
TREF ROSE 186R

ACT BW
99
ADJ WW
663

	CE	BW	WW	YW	MK	TM	CM	SC	DC	YG	CW	RE	MB	\$TPI
EPDS	5	4	65	104	23	56	3	0.28	13	-0.63	19	1.22	-0.34	73.71
% RANK	95	95	50	40	70	60	95	85	55	2	85	15	95	>95

LOT 34: Raised by a first calf heifer, he comes in a moderate package and carries the homo polled and homo black gene.
F94L MYOSTATIN 2 CALVING EASE: E



LOT 36

35

TREF NEWSWIRE 902N

PUREBRED (100/89.9) BULL - HOMO POLLED - RED
03/06/25 - TREF 902N - NPM3376950

TREF EZ STREET 107E
TREF LARIET 660L
TREF HONEY OATS 660H ET

WULFS CAPER 3303C
TREF COCOA BEAN 107C
B BAR BENTLEY 8D
TREF CHARLOTTE 192C

WULFS AMAZING BULL T341A
TREF LEAH 902L ET
TREF YAKIRA 766Y

HUNT MR JOCK 44J
WULFS ULTRA DIAMOND 8571U
ROMN TOW TRUCK 111T
TREF SASHA 266S

ACT BW
95
ADJ WW
738

	CE	BW	WW	YW	MK	TM	CM	SC	DC	YG	CW	RE	MB	\$TPI
EPDS	7	1.9	63	91	32	63	4	1.07	16	-0.55	31	1.21	-0.44	100.5
% RANK	80	65	60	65	5	20	85	10	10	15	55	15	>95	65

LOT 35: Long, smooth made TREF Lariat son raised by a first calf heifer that is a direct daughter out of our original donor, TREF Yakira.
CALVING EASE: EE

36

TREF NERO 932N

PUREBRED (100/91) BULL - HOMO POLLED - HOMO BLACK
02/17/25 - TREF 932N - NPM3376991

BALAMORE ENDEAVOR 701E
BALAMORE HERSHEY 0120H
CLARKS EXTRAVAGANT KISS

RLF YARDLEY 601Y
CLARKS AFFECTIVE KISS
CLARKS BLOCKBUSTER DKC
UNFORGETTABLE KISS

GE-EPDS

RICHMOND FANTOM SRD 102F
TREF LEXUS 932L
TREF GIANNA 544G

RICHMOND CRUSADER SRD 53C
RICHMOND BLUSH SRD 93D
WULFS CAPER 3303C
TREF YOGURT 765Y

ACT BW
78
ADJ WW
715

	CE	BW	WW	YW	MK	TM	CM	SC	DC	YG	CW	RE	MB	\$TPI
EPDS	13	1.1	66	99	28	61	8	0.46	16	-0.52	34	1.13	-0.22	118.1
% RANK	25	50	50	50	20	30	20	65	10	20	45	25	75	35

LOT 36: Had I spent more time with the bulls and paid more attention, this guy would have started the sale. He stayed under the radar and wasn't noticed until after he was clipped. Raised by a great heifer yet he fits right in with the cow's bulls. He had the noble look of a herd sire already as a calf. To top it all off, he's homo polled and homo black!
F94L MYOSTATIN 1 CALVING EASE: EE



YEARLING BULLS

37

TREF NO NONSENSE 662N

PUREBRED (100/88.8) BULL - HOMO POLLED - RED
03/09/25 - TREF 662N - NPM3376959

TOMV DIESEL 619 D
TREF HARDCORE 204H
TREF DELANEY 204D

RPY PAYNES CRACKER 17E
TREF HONEYCOMB 662H ET
TREF YAKIRA 766Y

GV AUSTIN 701A
MISS TOM 118Y
JYF YIELDMASTER 80Y
TREF TREASURE 304T

GE-EPDs

COLE ARCHITECT 08A
EDW BEACH BODY
ROMN TOW TRUCK 111T
TREF SASHA 266S

ACT BW
97
ADJ WW
761

CE	BW	WW	YW	MK	TM	CM	SC	DC	YG	CW	RE	MB	\$TPI	
EPDS	7	3.8	76	123	32	70	2	0.65	15	-0.47	43	1.21	-0.27	119.1
% RANK	80	95	20	10	5	4	>95	35	20	35	20	15	85	35

LOT 37: Long bodied and is a very closely related as a bull can be to Lot 3. Both are sired by Hardcore and their dams are ET flushmates out of Paynes Cracker. 14 EPDs in the top 25%. CALVING EASE: E



Selling a Brand

38

TREF NOTARY 310N

PUREBRED (100/88.9) BULL - HOMO POLLED - RED
03/06/25 - TREF 310N - NPM3376949

TOMV DIESEL 619 D
TREF HARDCORE 204H
TREF DELANEY 204D

DLVL AEROSMITH 329A
TREF ESMERELDA 310E
TREF CINDERELLA 110C

GV AUSTIN 701A
MISS TOM 118Y
JYF YIELDMASTER 80Y
TREF TREASURE 304T

GE-EPDs

DLVL YOUNG GUN 125Y
DLVL MISS TIDE 790T
JYF YIELDMASTER 80Y
TREF ZIPPY 810Z

ACT BW
90
ADJ WW
655

CE	BW	WW	YW	MK	TM	CM	SC	DC	YG	CW	RE	MB	\$TPI	
EPDS	10	0.6	56	92	29	56	8	0.15	15	-0.59	26	1.16	-0.3	103.7
% RANK	55	40	80	65	15	60	20	90	20	5	65	20	90	60

LOT 38: This calf basically raised himself as his old dam hobbled around most of the summer. Then, the Hardcore genetics kicked in and he really responded post weaning. F94L MYOSTATIN 2 CALVING EASE: E



LOT 38

39

TREF NIGHT SHADE 808N

PUREBRED (100/89.3) BULL - HOMO POLLED - BLACK
04/07/25 - TREF 808N - NPM3376989

BALAMORE ENDEAVOR 701E
BALAMORE HERSHEY 0120H
CLARKS EXTRAVAGANT KISS

TREF ZEUS 232Z
TREF KALLIE 808K ET
TREF ALEXANDRIA 984A

RLF YARDLEY 601Y
CLARKS AFFECTIVE KISS
CLARKS BLOCKBUSTER
DKC UNFORGETTABLE KISS

ROMN TOW TRUCK 111T
TREF RED WINE 232R
TOMV YELLOWSTONE 153Y
TREF TINY GIRL 384T

ACT BW
86
ADJ WW
664

CE	BW	WW	YW	MK	TM	CM	SC	DC	YG	CW	RE	MB	\$TPI	
EPDS	14	-0.1	56	86	26	54	8	0.53	15	-0.53	19	0.96	-0.44	81.22
% RANK	20	25	80	75	40	70	20	50	20	15	85	60	>95	95

LOT 39: A Nice made Hershey son that is moderate and has great genes. His dam is an ET mating of TREF Zeus and TREF Alexandria. Lots of maternal going on here. CALVING EASE: EEE



95% made the Bull Pen

40

TREF NICKLEBACK 804N

PUREBRED (85/77.2) BULL - DB POLLED - RED
03/23/25 - TREF 804N - NXM3376981

TREF EZ STREET 107E
HL EZ MONEY 821H
TREF FRANKIE 420F

TREF HARDCORE 204H
TREF KINGSLEY 804K
TREF ANGELICA 939A

WULFS CAPER 3303C
TREF COCOA BEAN 107C
LFLC BANK ACCOUNT 701B
TREF DUSTY ROSE 220D

TOMV DIESEL 619D
TREF DELANEY 204D
TREF WARLORD 334W
COMMERCIAL COW

ACT BW
93
ADJ WW
661

CE	BW	WW	YW	MK	TM	CM	SC	DC	YG	CW	RE	MB	\$TPI	
EPDS	3.1	77	123	32	71	1	0.65	16	-0.44	55	1.19	-0.19	138.2	
% RANK	>95	85	15	10	5	3	>95	35	10	40	2	15	65	10

LOT 40: ASleek EZ Money bull that will add style to a set of calves. CALVING EASE: E



Our bulls are next to nothing



TESTIMONIALS

“HAVE BEEN INVOLVED IN LIMOUSIN CATTLE FOR A VERY LONG TIME. OVER THE YEARS, I HAVE PURCHASED OVER 20 FEMALES AND 2 BULLS FROM GLENN TREFTZ . THE FEMALES HAVE ALWAYS MOVED TO THE TOP OF MY HERD. THEIR CALF RAISING AND BREED BACK ABILITY HAVE BEEN NEXT TO NONE. THE BULLS HAVE MAINTAINED THAT QUALITY AND PASSED THE GROWTH AND BREEDING ABILITY TO MY ORIGINAL HERD. I’M SURPRISED NOT MORE LIMI BREEDERS HAVE NOT PURCHASED MORE OF THE LIMOUSIN GENETICS GLENN HAS TO OFFER. GLENN, IT HAS BEEN A PLEASURE WORKING WITH YOU AND WATCHING THE GENETICS THAT YOU HAVE BRED INTO THE LIMOUSIN BREED. I LOOK FORWARD TO MANY MORE YEARS WATCHING YOU DEVELOP THE BREED. YOU HAVE TRULY MAINTAINED WHAT THE LIMOUSIN BREED WAS BROUGHT TO THE UNITED STATES TO DO FOR THE BEEF INDUSTRY”.

-DUSTIN PECK, HARRISONVILLE, MISSOURI

“GLENN’S INTEGRITY AND COMMITMENT TO THE LIMOUSIN BREED IS UNRIVALED. HIS FOCUS ON RAISING CATTLE TO MEET RIGOROUS STANDARDS GIVES US PRODUCERS A SOURCE OF CATTLE FOR THE GENETICS WE NEED. CATTLE FROM TREFTZ ARE THOUGHTFULLY BRED FOR THE BEST MUSCLING, GENTLE DISPOSITIONS, AND TO BE FUNCTIONAL AND PROFITABLE. WE HAVE GENUINELY APPRECIATED GLENN’S CUSTOMER SERVICE AND THE EFFORT HE PUTS INTO BUILDING PERSONAL RELATIONSHIPS WITH HIS CUSTOMERS. HE REACHES OUT THROUGHOUT THE YEAR TO SEE HOW THE BULLS ARE WORKING IN OUR PROGRAM AND HE IS OPEN TO OUR FEEDBACK. INVESTING IN TREFTZ GENETICS WILL IMPROVE YOUR FUTURE PROFITS AND HELP YOU BUILD LONGEVITY IN YOUR PROGRAM.”

• *JOHN PAUL AND KARA STOLL, PAVILLION, WY*

“TREFTZ BULLS HAVE THE VOLUME AND MUSCLE MASS THAT REPRESENT TRUE LIMOUSIN BREED CHARACTERISTICS, THE SAME REASON MY GRANDPA STARTED WITH LIMOUSIN CATTLE 43 YEARS AGO. TREFTZ GENETICS HAVE IMPROVED MY HERD WHILE MAINTAINING TRUE BREED TRAITS AND INCREASING WEANING WEIGHTS AND OVERALL PERFORMANCE. GLENN IS GREAT TO WORK WITH, AND I ALWAYS ENJOY VISITING WITH HIM; WHAT STARTS AS A QUICK PHONE CALL OFTEN TURNS INTO A LONG CONVERSATION ABOUT THE LIMOUSIN BREED WE BOTH BELIEVE IN”.

• *JEREMY LARSON, TYLER, MINNESOTA*



TWO'S AND FALL YEARLINGS



41

TREF MAN POWER 168M

PUREBRED (100/91.1) BULL - HOMO POLLED - BLACK
04/27/24 - TREF 168M - NPM2807578

RICHMOND CRUSADER SRD 53C
RICHMOND FANTOM SRD 102F
RICHMOND BLUSH SRD 93D

RICHMOND ZODIAC SRD 29Z
RICHMOND ZANDY SRD 49Z
RICHMOND BLACKOUT SRD 10B
RICHMOND BLUSH SRD 178B

ROMN ZINGRAY 125Z
TREF CHARDONEY 168C
TREF YOGURT 765Y

WULFS WAGON TRAIN 3197W
ROMN RAZZLE DAZZLE 10R
DVCL.MR UNBELIEVABLE U03
TREF 565J (♀)

ACT BW
94
ADJ WW
694

	CE	BW	WW	YW	MK	TM	CM	SC	DC	YG	CW	RE	MB	STPI
EPDS	6	3.3	53	81	32	58	4	0.9	13	-0.48	33	0.91	-0.4	97.48
% RANK	90	90	85	80	5	50	85	15	55	30	45	70	>95	70

LOT 41: A direct son out of the TREF Chardoney cow that she raised after we flushed her a couple of years ago. He was a bit young so we held him for a 2 year old and wow did he develop! Keep daughters here as he is in the top 3% for milk. Easy natured bull.
CALVING EASE: E



Lot 41 Dam



Lot 41 Sire



42

TREF MANCHESTER 804M

PERCENTAGE (85/77.5) BULL - HOMO POLLED - RED
02/17/24 - TREF 804M - NXM2799855

GV X-MAN 343E
GV GRID IRON 862G
GV MS AMHERST 5517C

GV X-MAN 446Z
GV MISS GENERAL 864U
HUNT AMHERST 71A
GV MISS TUFF ENUFF 9910W

TREF HARDCORE 204H
TREF KINGSLEY 804K
TREF ANGELICA 939A

TOMV DIESEL 619D
TREF DELANEY 204D
TREF WARLORD 334W
COMMERCIAL LIMOUSIN COW

ACT BW
72
ADJ WW
756

	CE	BW	WW	YW	MK	TM	CM	SC	DC	YG	CW	RE	MB	STPI
EPDS	12	1	71	105	26	61	7	0.4	13	-0.5	28	1.11	-0.27	102.7
% RANK	30	65	25	30	30	25	35	80	30	5	80	15	>95	75

LOT 42: He was prepared to lead off our heifer bull pen last year in our sale, but boys will be boys and he happened to get slightly injured a day prior to the sale when we had a short warm spell and they got to messing around. He's been fine ever since. Anyway, here's another opportunity to purchase him, now older, wiser, and able to breed twice as many heifers. (Pictured above as a yearling)
CALVING EASE: EE



Lot 42- Summer of 2024

43

TREF MISCHIEF 931M

PUREBRED (87/91.6) BULL - SCURRED - RED
04/02/24 - TREF 931M - NPM2799923

GV X-MAN 343E
GV GRID IRON 862G
GV MS AMHERST 5517C

GV X-MAN 446Z
GV MISS GENERAL 864U
HUNT AMHERST 71A
GV MISS TUFF ENUFF 9910W

RICHMOND XANDER SRD 22X
TREF ACQUIRED TASTE 931A
TREF PICTURESQUE 031P

RIPY PAVNES MARATHON 47U
RICHMOND TWIST SRD 22T
ROMN JUSTICE
COMMERCIAL LIMOUSIN COW

ACT BW
85
ADJ WW
702

	CE	BW	WW	YW	MK	TM	CM	SC	DC	YG	CW	RE	MB	STPI
EPDS	13	1.1	57	75	21	50	9	0.3	4	-0.5	15	0.94	-0.28	87.9
% RANK	25	50	75	90	85	85	10	80	>95	25	95	65	90	85

LOT 43: He is the last of the GV Grid Irons to sell. Like his sire, he should sire some great daughters with beautiful udders. We removed his scurs shortly before the sale.
CALVING EASE: EE



TWO'S AND FALL YEARLINGS



LOT 44

44

TREF MAXIMUS 039M

PUREBRED (87/92.3) BULL - DB POLLED - RED
08/18/24 - TREF 039M - NPM3136399

TOMV DIESEL 619 D
TREF HARDCORE 204H

TREF DELANEY 204D

CF JIM DANDIE 216U

TREF BLOOM 039B

TREF PICTURESQUE 031P

GV AUSTIN 701A
MISS TOM 118Y
JYF YIELDMASTER 80Y
TREF TREASURE 304T

EAFF POLLED HUMMER 530P

CF POLLED DANDIE 040P

ROMN JUSTICE

COMMERCIAL LIMOUSIN COW

ACT BW

91

ADJ WW

813

EPDS	CE	BW	WW	YW	MK	TM	CM	SC	DC	YG	CW	RE	MB	STPI
7	3.6	78	122	35	74	6	0.25	10	-0.54	40	1.28	-0.25	116.4	
% RANK	80	90	15	10	1	2	55	85	80	15	30	10	80	40

LOT 44: We saved the name "Maximus" purposely for this bull. His dam is a 12 year old Jim Dandie daughter that holds the record in our herd for both weaning and yearling weights plus has a milk EPD of +38. Her 5 bulls have an average weaning weight of 835 (112 index) while the 3 heifers averaged 651 lbs (109 index). To make it even more powerful, we mated her to Hardcore, the performance giant, and Maximus is the result. His photo doesn't serve him justice. You need to see him in person. 11 EPDs in the top 20%.
F94L MYOSTATIN 2 CALVING EASE: E



Lot 44 Dam



Lot 44 Sire



LOT 45

45

TREF MATT DILLON 639M

PUREBRED (100/91.9) BULL - HOMO POLLED - RED
08/22/24 - TREF 639M - NPM3136402

RICHMOND CRUSADER SRD 53C
RICHMOND FANTOM SRD 102F
RICHMOND BLUSH SRD 93D

TOMV DIESEL 619D
TREF HIDDEN GEM 639H

TREF ZENA 836Z

RICHMOND ZODIAC SRD 29Z
RICHMOND ZANDY SRD 49Z
RICHMOND BLACKOUT SRD 10B
RICHMOND BLUSH SRD 178B

GV AUSTIN 701A
MISS TOM 118Y
RICHMOND XANDER SRD 22X
TREF PERFECTION 036P

GE-EPDS

ACT BW

97

ADJ WW

722

EPDS	CE	BW	WW	YW	MK	TM	CM	SC	DC	YG	CW	RE	MB	STPI
1	6.2	72	122	28	54	1	0.4	13	-0.46	46	1.16	-0.39	111.4	
% RANK	>95	>95	30	25	20	15	>95	65	55	35	15	20	>95	45

LOT 45: If you like your bulls powerful and stout, apply the brakes here. He has as much Limousin character as any bull in the sale. We are not concerned with his BW cpd as he was under 100 lbs and born unassisted. We don't assist our cows at calving and we don't expect our customers to either. 10 EPDs in the top 10%.
F94L MYOSTATIN 2 CALVING EASE: E

46

TREF MASTER 706M

PUREBRED (100/91.9) BULL - HOMO POLLED - RED
08/19/24 - TREF 706M - NPM3136400

RICHMOND CRUSADER SRD 53C
RICHMOND FANTOM SRD 102F
RICHMOND BLUSH SRD 93D

TREF GRAND SLAM 111G

TREF JIA 706J

TREF BABY DOLL 034B

RICHMOND ZODIAC SRD 29Z
RICHMOND ZANDY SRD 49Z
RICHMOND BLACKOUT SRD 10B
RICHMOND BLUSH SRD 178B

TREF COAL TRAIN 707C

TREF CHANEL 111C

CF JIM DANDIE 216U

TREF WHISPER 534W

GE-EPDS

ACT BW

85

ADJ WW

708

EPDS	CE	BW	WW	YW	MK	TM	CM	SC	DC	YG	CW	RE	MB	STPI
7	3	62	97	31	62	4	0.45	11	-0.46	40	1.14	-0.38	108.3	
% RANK	80	85	60	55	10	25	85	65	75	35	30	25	>95	55

LOT 46: Building our registered herd from a core group of English bred herd over 40 years ago, we have reached high percentage purebreds like this bull of 100/91.9 Without a doubt, these are the kind of bulls that really create a bang when used in a crossbred program. But that's not all, with a +32 milk EPD, he will produce females that can raise the 700+ lb calves.
F94L MYOSTATIN 1 CALVING EASE: EEE

47

TREF MATLOCK 491M

PUREBRED (93/90.1) BULL - HOMO POLLED - RED
08/10/24 - TREF 491M - NPM3136395

TOMV DIESEL 619 D
TREF HARDCORE 204H

TREF DELANEY 204D

JYF YIELDMASTER 80Y

TREF FLICKER 491F

TREF ALWAYS SWEET 991A

GV AUSTIN 701A
MISS TOM 118Y
JYF YIELDMASTER 80Y
TREF TREASURE 304T

TMF SYMBOL 188S

AIRLIE TARA

RICHMOND XANDER SRD 22X

TREF TEAPOT 316T

GE-EPDS

ACT BW

105

ADJ WW

648

EPDS	CE	BW	WW	YW	MK	TM	CM	SC	DC	YG	CW	RE	MB	STPI
1	5.5	72	116	30	66	1	0.06	16	-0.48	35	1.17	-0.21	102.2	
% RANK	>95	>95	30	20	15	10	>95	95	10	30	40	20	70	65

LOT 47: Deep bodied Hardcore son out of a heavy milking Yieldmaster daughter that nails it every year. Another bull to sire females you'll be proud of. 11 EPDs in the top 30%.
F94L MYOSTATIN 2 CALVING EASE: E



TWO'S AND FALL YEARLINGS



48

RJJR MR KALL 167M

PUREBRED (100/87.7) BULL - HOMO POLLED - DB BLACK
03/14/24 - RJJR 167M - NPM3311172

LFLC CHECKING ACCOUNT 701C
WULFS KLOSE KALL T281K
TECS DUCHESS 1625D
TREF GUNPOWDER 290G
TREF KYRA 819K
TREF GLORY 502G

WULF'S ZIPLOCK N922Z
LFLC 701X XTRA GOOD
WULFS AMAZING BULL T341A
TECS APPEALING 1354

SVES EASY GOING 77E
TREF DAKOTA LOVE 290D
WULFS CAPER 3303C
TREF DARK CHOCOLATE 205D

ACT BW
72
ADJ WW
670

	CE	BW	WW	YW	MK	TM	CM	SC	DC	YG	CW	RE	MB	\$TPI
EPDS	11	0.9	72	109	27	64	6	0.85	11	-0.56	18	1.05	-0.37	78
% RANK	45	45	30	30	30	15	55	20	75	10	90	40	>95	95

LOT 48: He was bred in our program but calved and raised by one of our long and loyal customers, Jeremy Larson, when he purchased his dam as a bred heifer. We were impressed enough to bring him back home as a weaning calf and now as a tremendous two year old. He's very easy on the eyes and should be on heifers as well. Super quiet bull. Very balanced EPDs across the board with 12 EPDs in the top 35%.
CALVING EASE: EE



49

TREF MIDNIGHT TRAIN 828M

PUREBRED (100/90.5) BULL - HOMO POLLED - BLACK
07/22/24 - TREF 828M - NPM3136381

BALAMORE ENDEAVOR 701E
BALAMORE HERSHEY 0120H
CLARKS EXTRAVAGANT KISS
GV GRID IRON 862G
TREF KARLEE 828K
TREF GODDESS 521G

RLF YARDLEY 601Y
CLARKS AFFECTIVE KISS
CLARKS BLOCKBUSTER
DKC UNFORGETTABLE KISS

GV X-MAN 343E
GV MS AMHERST 3517C
TOMV DIESEL 619D
TREF BUTTERFLY 066B

ACT BW
72
ADJ WW
684

	CE	BW	WW	YW	MK	TM	CM	SC	DC	YG	CW	RE	MB	\$TPI
EPDS	14	0	64	96	26	58	8	0.16	15	-0.57	31	1.26	-0.36	109.3
% RANK	20	30	55	55	40	50	20	90	20	10	55	10	>95	50

LOT 49: Long bodied fall bull that is smooth in his design yet with good muscle. All EPD indicators are he should be heifer safe along with calving ease on both sides of his pedigree with Hershey and Grid Iron represented. Nice disposition. 9 EPDs in the top 25%.
CALVING EASE: EEE

50

TREF MONTGOMERY 630M

PUREBRED (100/90.5) BULL - HOMO POLLED - BLACK
08/04/24 - TREF 630M - NPM3136388

BALAMORE ENDEAVOR 701E
BALAMORE HERSHEY 0120H
CLARKS EXTRAVAGANT KISS
TOMV DIESEL 619D
TREF HOMECOME QUEEN 630H
TREF ELANA 318E

RLF YARDLEY 601Y
CLARKS AFFECTIVE KISS
CLARKS BLOCKBUSTER
DKC UNFORGETTABLE KISS

GV AUSTIN 701A
MISS TOM 118Y
ROMN TOW TRUCK 111T
TREF CLEMENTINE 106G

ACT BW
73
ADJ WW
706

	CE	BW	WW	YW	MK	TM	CM	SC	DC	YG	CW	RE	MB	\$TPI
EPDS	16	-1.1	61	69	27	57	9	0.1	16	-0.57	29	1.26	-0.35	108.9
% RANK	10	15	65	55	30	55	10	90	10	10	60	10	95	50

LOT 50: If this bull doesn't calve easy, I'll quit my scoring system. Every indication is he should be a great choice for heifers and with his additional age, able to breed twice as many. To make it even better, he sports a 700+ weaning weight. One of the great cows of our whole herd is represented on the dam side with TREF Elana, our only Tow Truck female. 12 EPDs in the top 30%.
CALVING EASE: EEE



Sire to lots 49, 50, 51, 52, 53, 54

51

TREF MAGIC MAN 806M

PUREBRED (87/80.4) BULL - DB POLLED - BLACK
08/02/24 - TREF 806M - NPM3136383

BALAMORE ENDEAVOR 701E
BALAMORE HERSHEY 0120H
CLARKS EXTRAVAGANT KISS
TOMV DIESEL 619D
TREF KIWI 806K ET
TREF BRYNN 075B

RLF YARDLEY 601Y
CLARKS AFFECTIVE KISS
CLARKS BLOCKBUSTER
DKC UNFORGETTABLE KISS

GV AUSTIN 701A
MISS TOM 118Y
CF JIM DANDIE 216U
TREF 475

ACT BW
75
ADJ WW
631

	CE	BW	WW	YW	MK	TM	CM	SC	DC	YG	CW	RE	MB	\$TPI
EPDS	10	1.4	70	108	25	60	8	0.1	12	-0.56	39	1.24	-0.34	119.2
% RANK	55	55	35	30	50	40	20	90	70	15	30	15	95	35

LOT 51: Our deluxe calving bull Balamore Hershey brings us another one to impress. His dam is an ET daughter of our old matriarch, TREF Brynn, that sells as Lot 64. With his look and his background, you can't go wrong here.
CALVING EASE: EEE



LOT 51

TWO'S AND FALL YEARLINGS



52

TREF MACHETE 815M

PUREBRED (100/90.6) BULL - HOMO POLLED - BLACK
08/08/24 - TREF 815M - NPM3136392

BALAMORE ENDEAVOR 701E
BALAMORE HERSHEY 0120H

CLARKS EXTRAVAGANT KISS

ANCHOR B GOLD RUSH 48G

TREF KLEMENTINE 815K

TREF ELANA 318E

RLF YARDLEY 601Y
CLARKS AFFECTIVE KISS
CLARKS BLOCKBUSTER
DKC UNFORGETTABLE KISS

B BAR AUSTIN HEALY 4D ET
ANCHOR B BAILEY 21B
ROMIN TOW TRUCK 111T
TREF CLEMENTINE 106C

ACT BW
88
ADJ WW
708

	CE	BW	WW	YW	MK	TM	CM	SC	DC	YG	CW	RE	MB	\$TPI
EPDS	7	2.7	73	113	28	65	5	0.4	15	-0.59	35	1.39	-0.39	139.7
% RANK	80	80	25	25	20	15	70	65	20	5	40	4	>95	20

LOT 52: There isn't a bull in this sale, or probably any Limousin sale, with as much natural muscle as this guy exhibits. Crossing Hershey with Gold Rush always works. Once again, having TREF Elana in the pedigree is just another free bonus.
CALVING EASE: E



A 40 year old decision, never second guessed



Fall power, calm presence

53

TREF MALONE 853M

PUREBRED (100/90.5) BULL - HOMO POLLED - BLACK
08/28/24 - TREF 853M - NPM3136406

BALAMORE ENDEAVOR 701E
BALAMORE HERSHEY 0120H

CLARKS EXTRAVAGANT KISS

TOMV DIESEL 619D

TREF KENZIE 853K

TREF CHARLOTTE 192C

RLF YARDLEY 601Y
CLARKS AFFECTIVE KISS
CLARKS BLOCKBUSTER
DKC UNFORGETTABLE KISS

GV AUSTIN 701A
MISS TOM 118Y
RPY PAYNES DERBY 46Z
TREF ZAZU 892Z

ACT BW
71
ADJ WW
623

	CE	BW	WW	YW	MK	TM	CM	SC	DC	YG	CW	RE	MB	\$TPI
EPDS	15	-0.5	58	94	27	56	8	0.2	15	-0.56	32	1.2	-0.38	122.7
% RANK	15	20	75	60	30	60	20	85	20	10	15	15	>95	40

LOT 3: Class and stoutness in one package describe this bull. The maternal side on his dam's side is one of our most consistent. He has a little dash of white on his sheath.
CALVING EASE: EE



We wouldn't sell you a bull we wouldn't use ourselves...

54

TREF MEMPHIS 729M

PUREBRED (100/90.6) BULL - DB POLLED - BLACK
08/15/24 - TREF 729M - NPM3136397

BALAMORE ENDEAVOR 701E
BALAMORE HERSHEY 0120H

CLARKS EXTRAVAGANT KISS

WULFS FIAT K683F ET

TREF JOCELYN 729J

TREF ZENA 836Z

RLF YARDLEY 601Y
CLARKS AFFECTIVE KISS
CLARKS BLOCKBUSTER
DKC UNFORGETTABLE KISS

HUNT CREDENTIALS 37C ET
WULFS SOLOIST 6284S
RICHMOND XANDER SRD 22X
TREF PERFECTION 036P

ACT BW
93
ADJ WW
774

	CE	BW	WW	YW	MK	TM	CM	SC	DC	YG	CW	RE	MB	\$TPI
EPDS	6	3.2	70	102	31	66	4	0.23	14	-0.52	29	1.11	-0.27	105.3
% RANK	90	85	35	45	10	10	85	85	40	20	60	25	85	65

LOT 3: His dam is a beautiful Wulfs Fiat (Hunt's Credential) daughter with ample milk. Big weaning weight of 774 (112).
CALVING EASE: E



Where strength begins



THE LIMOUSIN ADVANTAGE

"THE CARCASS BREED"



"Start thinking meat gain and not carcass gain" was the main message I took away from a Texas Tech meat scientist. As cattle numbers keep shrinking, carcasses keep getting heavier, but not necessarily better. Towards the end of finishing, feed efficiency is at its poorest and most of the gain comes in the form of fat as they mature, depending on the genetics. Genetic selection should focus on muscling and efficiency. Packing plants are quickly looking at new technologies like 3D imaging and CT scans that accurately and, objectively (*very important word here*) measure muscle. The chute side equipment can measure cattle from the side, rear, and above. Once the animal is harvested, it can be scanned at the plant to also determine red meat yield. "The current yield grade equation is decades out of date and grossly inaccurate and needs to be updated." He goes on to say, "Tenderness is a trump card in the game, and you have to have tenderness to be acceptable from a consumer standpoint. Once tenderness is acceptable, then it's all about flavor."



The Limousin bulls you see in this catalog fit this scenario PERFECTLY. We've paid close attention to yield, muscle, efficiency, and sires that carry the F94L2 myostatin tenderness gene, since our inception. The muscle is evident as you view the bulls, the yield can be seen on our EPDs, and the F94L gene is in the footnotes for those that we tested. It's never too early to get started if you haven't bought a bull that will increase your muscle and yield, it may be time to start paying attention.



BRED HEIFERS



55

TREF MYSTIC 022M

PUREBRED (100/88.9) COW - HOMO POLLED - RED
02/24/24 - TREF 022M - NPFF279864

	CE	BW	WW	YW	MK	TM	CM	SC	DC	YG	CW	RE	MB	STPI
EPDS	14	0.3	59	81	25	55	7	0.58	15	-0.48	19	0.9	-0.35	89.15
% RANK	20	35	70	80	50	65	35	50	20	30	85	70	95	85

ACT BW
77
ADJ WW
621

GV X-MAN 343E
GV GRID IRON 862G
GV MS AMHERST 5517C
TREF ZEUS 232Z
TREF KALLIE 808K ET
TREF ALEXANDRIA 984A

GV X-MAN 446Z
GV MISS GENERAL 864U
HUNT AMHERST 71A
GV MISS TUFF ENUFF 9910W

ROMN TOW TRUCK 111T
TREF RED WINE 232R
TOMV YELLOWSTONE 153Y
TREF TINY GIRL 384T

LOT 55

LOT 55: Here is a Grid Iron daughter that goes back to a flush of two of our most popular animals, TREF Zeus and TREF Alexandria. She has a moderate frame, deep side, and easy attitude. There is an abundance of maternal in her pedigree. We usually don't sell bred heifers off the top of our replacements or one AI bred to B Bar Bentley, but here she is. Ultrasound safe to B Bar Bentley for a Feb 2/18/26 calf.



Lot 55 service sire, B Bar Bentley



56

TREF MERCY 049M

PUREBRED (100/90.2) COW - HOMO POLLED - RED
03/16/24 - TREF 049M - NPFF2799905

	CE	BW	WW	YW	MK	TM	CM	SC	DC	YG	CW	RE	MB	STPI
EPDS	16	-0.5	62	93	27	58	9	0.25	16	-0.49	33	1.13	-0.32	116.1
% RANK	10	20	60	60	30	50	10	85	10	30	45	25	95	35

ACT BW
76
ADJ WW
655

GV X-MAN 343E
GV GRID IRON 862G
GV MS AMHERST 5517C
TOMV DIESEL 619D
TREF HAYDEN 658H
TREF CHARLOTTE 192C

GV X-MAN 446Z
GV MISS GENERAL 864U
HUNT AMHERST 71A
GV MISS TUFF ENUFF 9910W

GV AUSTIN 701A
MISS TOM 118Y
RPY PAYNES DERBY 46Z
TREF ZAZU 892Z

LOT 56

LOT 56: A very high percentage heifer that goes back to another cow that has been a mainstay in our herd, TREF Charolette 192C. If she has a bull calf, you just got yourself a great heifer bull candidate. The last breeding cycle we combine groups and use multiple bulls. Ultrasound safe to either TREF Lariat or OLIM Matador for a 4/3/2026 calf. Matador was a member of the 2025 NWSS Champion Pen of 3 for Ochsner Limousin and the high seller at their first production sale.



Lot 56 service sire, OLIM Matador



BRED HEIFERS



57

TREF LYRIC 992L

PUREBRED (87/87.7) COW - HOMO POLLED - RED
08/12/23 - TREF 992L - NPF2607043

	CE	BW	WW	YW	MK	TM	CM	SC	DC	YG	CW	RE	MB	\$TPI
EPDS	6	4.1	60	92	27	56	3	0.55	13	-0.36	35	0.92	-0.34	97.18
% RANK	90	95	70	65	30	60	95	50	55	70	40	65	95	70

ACT BW
79
ADJ WW
576

RICHMOND CRUSADER SRD 53C
RICHMOND FANTOM SRD 102F
RICHMOND BLUSH SRD 93D
VL YES MAN 111Y
TREF DARK CHOCOLATE 205D
TREF SOPHISICATION 207S

RICHMOND ZODIAC SRD 29Z
RICHMOND ZANDY SRD 49Z
RICHMOND BLACKOUT SRD 10B
RICHMOND BLUSH SRD 178B
RUNL TRAVIS 332T
VL TOLD YA SO
JBAK MONTANA 680M
COMMERCIAL LIMOUSIN COW



Lot 57 service sire, Greenwood Shift

LOT 57: An absolutely beautiful heifer with some extra age and the traditional color, markings, and muscle of Limousin. She is a natural calf raised by one of our former donors, TREF Dark Chocolate 205D, who is a descendant of TREF Sophistication. To make it even better, she is bred to Greenwood Shift with twins! As far as we are aware, these will be the only progeny of this bull in the US giving you the opportunity to sell an outcross bloodline. Ultrasound safe to Greenwood Shift 701L ET for 2/17/2026 calves.



58

TREF LINDSEY 995L

PERCENTAGE (75/71.4) COW - DB POLLED - BLACK
08/18/23 - TREF 995L - NXF2607047

	CE	BW	WW	YW	MK	TM	CM	SC	DC	YG	CW	RE	MB	\$TPI
EPDS	2	5.4	72	111	27	63	2	0.4	8	-0.34	56	1.04	-0.17	139.7
% RANK	>95	>95	20	25	20	15	>95	80	>95	20	15	20	95	30

ACT BW
94
ADJ WW
700

RICHMOND CRUSADER SRD 53C
RICHMOND FANTOM SRD 102F
RICHMOND BLUSH SRD 93D
CF JIM DANDIE 216U
TREF BRYNN 075B
TREF 475

RICHMOND ZODIAC SRD 29Z
RICHMOND ZANDY SRD 49Z
RICHMOND BLACKOUT SRD 10B
RICHMOND BLUSH SRD 178B
EAFF POLLED HUMMER 530P
CF POLLED DANDIE 040P
COMMERCIAL BULL
COMMERCIAL COW



Lot 58 service sire, TREF Lariat

LOT 58: Another 2 ½ year old bred heifer that will calf unassisted and breed back early with her extra age. She is a natural daughter of the Lot 64 cow, TREF Brynn 075B, that had a huge impact on our program, even if she was a percentage female. Her length of body will grab your attention in the pen along with her muscle expression. Ultrasound safe to TREF Lariat or OLIM Matador for a 3/29/2026 calf.



BRED HEIFERS



LOT 59: She's designed much like her dam, deep bodied with a nice neck extension. We had a few units of our TREF Hotshot 345H semen so we used one here. She will be in demand for her calf alone as he was well appreciated for his calving ease and growth. If you're lucky enough to get a bull calf, he will be easy to sell. Ultrasound safe to TREF Hotshot 345H for a 2/20/2026 calf.

59

TREF MALLORY 047M

PERCENTAGE (85/78.6) COW - DB POLLED - BLACK
03/16/24 - TREF 047M - NXF2799903

	CE	BW	WW	YW	MK	TM	CM	SC	DC	YG	CW	RE	MB	\$TPI
EPDS	12	0.5	62	96	24	54	7	0.25	15	-0.57	22	1.16	-0.34	115.8
% RANK	30	55	50	45	50	55	35	95	10	2	90	10	>95	65

ACT BW
80
ADJ WW
613

BALAMORE ENDEAVOR 701E
BALAMORE HERSHEY 0120H
CLARKS EXTRAVAGANT KISS
TOMV DIESEL 619D
TREF HADLEY 620H
TREF YOURS TRULY 739Y

RLF YARDLEY 601Y
CLARKS AFFECTIVE KISS
CLARKS BLOCKBUSTER
DKG UNFORGETTABLE KISS

GV AUSTIN 701A
MISS TOM 118Y
TREF WARLORD 334W
COMMERCIAL COW 439



Lot 59 service sire, TREF Hotshot



LOT 60: Long bodied natural Fantom daughter out of yet another one of our donors, TREF Chanel 111C, who is also the dam to TREF Grandslam who started off our sale a few years ago as Lot 1. He is still going strong at Schock Limousin where he is one of their all-time great herd bulls. Ultrasound safe to JBV Milestone for a 3/18/26 calf.

60

TREF MARIAH 044M

PUREBRED (96/91) COW - DB POLLED - RED
03/15/24 - TREF 044M - NPF2799899

	CE	BW	WW	YW	MK	TM	CM	SC	DC	YG	CW	RE	MB	\$TPI
EPDS	5	3.4	63	98	28	59	3	0.35	13	-0.42	37	1	-0.36	108
% RANK	95	90	60	50	20	45	95	80	55	50	35	50	>95	60

ACT BW
96
ADJ WW
683

RICHMOND CRUSADER SRD 53C
RICHMOND FANTOM SRD 102F
RICHMOND BLUSH SRD 93D
JYF YIELDMASTER 80Y
TREF CHANEL 111C
TREF WINDSWEPT 511W

RICHMOND ZODIAC SRD 29Z
RICHMOND ZANDY SRD 49Z
RICHMOND BLACKOUT SRD 10B
RICHMOND BLUSH SRD 178B

TMF SYMBOL 188S
AIRLIE TARA
ROMN TOW TRUCK 111T
TREF SCARLET 310G



Lot 60 dam, TREF Chanel 111C

SALE DAY 2025



FALL PAIRS

On Jan 20, 2026 Cows were vaccinated with Virashield 6+VL5 and Ultrabac 7 and poured with Protectus. Calves were vaccinated with Pyramid 5, Pro bac 4, Ultrabac 7 and poured with Protectus. Heifers were also Bangs vaccinated.



LOT 61: You are gonna fall in love with the look of this typical Gunpowder daughter. She is deep, thick, and as easy fleshing of a cow that you will ever find. She has a Balamore Hershey bull calf at side that could be your next heifer bull. To make this even more interesting, she is safe in calf to TREF Magnum 688M. Ultrasound due date 8/20/26. Calf tattoo TREF 769N

61

TREF JADA 769J

PUREBRED (87/90.4) COW - HET POLLED - RED
08/16/21 - TREF 769J - NPF2451060

	CE	BW	WW	YW	MK	TM	CM	SC	DC	YG	CW	RE	MB	\$TPI
EPDS	12	-0.4	49	75	22	46	7	0.45	16	-0.45	18	0.82	-0.29	85.91
% RANK	35	20	85	75	70	85	30	50	10	50	75	75	80	75

ACT BW
75
ADJ WW
608

SVES EASY GOING 77E
TREF GUNPOWDER 290G

TREF DAKOTA LOVE 290D

VL YES MAN 111Y

TREF AUBURN 915A

TREF UNANIMOUS 414U

COLE BUSINESSMAN 104B
MISS SVES RANSOM 76X
TREF ZEUS 232Z
TREF ADDIE 912A

RUNL TRAVIS 332T
VL TOLD YA SO
ROMN JUSTICE



Pasture sire to lot 61 and 64, TREF Magnum 688M



LOT 62: Here's a 4 year old cow in the prime of her life as well as a prime pedigree. She is a ET Paynes Diesel daughter out of our legendary matriarch cow, TREF Yakira 766Y. Her flushmate brothers were a big hit in our production sale a few years ago. It's hard to part with these that we put a lot of effort in creating. She has a promising Balamore Hershey bull calf at side. Her service sire is our home raised bull, TREF Lionheart 516L, who we own with Jim Thomas. Ultrasound due date 8/16/26. Calf tattoo TREF 753N

62

TREF JULIANNA 753J

PUREBRED (100/90.7) COW - HOMO POLLED - RED
02/24/21 - TREF 753J - NPF2386748

	CE	BW	WW	YW	MK	TM	CM	SC	DC	YG	CW	RE	MB	\$TPI
EPDS	3	5.7	69	103	21	55	-1	0.85	12	-0.4	39	1.11	-0.39	93.84
% RANK	>95	>95	20	25	80	50	>95	15	55	65	20	25	95	60

ACT BW
97
ADJ WW
637

COLE ARCHITECT 08A
TREF HARDCORE 204H

EMF POLL ZILL

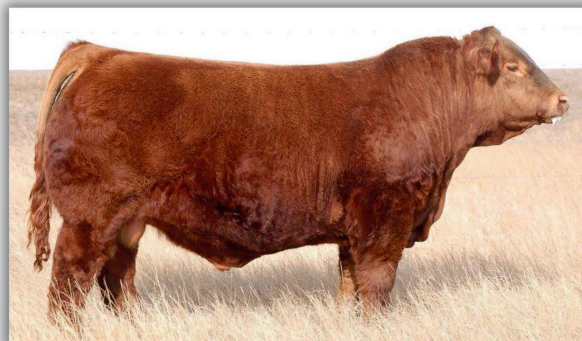
ROMN TOW TRUCK 111T

TREF YAKIRA 766Y

TREF SASHA 266S

MRL X-RATED 014X
COLE MISS LODESTAR 826U
RPY PAYNES TRILOGY 26T
EMF WINE AND ROSES

WULFS RANSOM 3059R
ROMN RITA 28R
JBAK MONTANA 680M
TREF 466H



Sire to Lot 62

FALL PAIRS



LOT 63

LOT 63: This impressive TREF Zeus daughter has produced a ton of revenue for our ranch over the years. Her last two sons were high sellers and are making a big splash in Georgia and Wyoming. She has a Balamore heifer calf at side. Ultrasound due date 8/26/26. Calf tattoo TREF 163N.

63

TREF DAKOTA DIXIE 283D

PUREBRED (89/86.7) COW - HOMO POLLED - BLACK
09/01/16 - TREF 283D - NPF2107099

	CE	BW	WW	YW	MK	TM	CM	SC	DC	YG	CW	RE	MB	\$TPI
EPDS	6	3.5	68	102	30	64	5	0.8	15	-0.46	41	1.08	-0.2	122.4
% RANK	90	90	25	25	20	10	65	15	20	45	15	30	60	20

ACT BW 97
ADJ WW 676

ROMN TOW TRUCK 111T
TREF ZEUS 232Z
TREF RED WINE 232R
TREF RIFLE 906R
TREF TINY GIRL 384T
TREF ROXIE 108R

WULFS RANSOM 3059R
ROMN RITA 28R
JBAK MONTANA 680M
TREF PRECIOUS 302G
COLE WULF HUNT
TREF MISS 906N
ROMN JUSTICE
TREF 308G



*TREF Lionheart 516L,
pasture sire to Lot 62 and 63*



Lot 63 son



LOT 64

LOT 64: Brynn has been an absolute solid producer for us and very hard to part with. Between her 6 flushmate calves and her own natural calves, she has produced 15 calves and everyone a homerun. She is a direct daughter of the old fullblood Jim Dandie known for his maternal ability. Her EZ Money heifer calf at side makes this Lot very worthy. Bred to TREF Magnum 688M. Ultrasound due date 9/12/26. Calf tattoo TREF 156N.

64

TREF BRYNN 075B

PERCENTAGE (50/50) COW - HET POLLED - RED
02/28/14 - TREF 075B - NXF2059247

	CE	BW	WW	YW	MK	TM	CM	SC	DC	YG	CW	RE	MB	\$TPI
EPDS	3	4.1	67	97	26	59	5	0.1	2	-0.33	50	1.01	0.12	113.2
% RANK	>95	95	40	50	40	40	70	90	>95	45	10	25	35	45

ACT BW 90
ADJ WW 676

EAFF POLLED HUMMER 530P
CF JIM DANDIE 216U
CF POLLED DANDIE 040P
COMMERCIAL BULL
TREF 475
COMMERCIAL COW

MINE GOLD MEDAL 436G
SOGF AMBER KRUG 264B
MH VELOCITY
SVL POLLED NADINE 831L

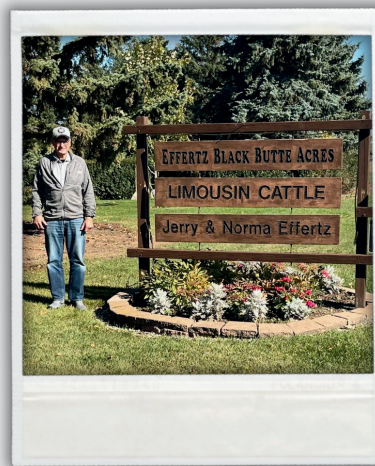
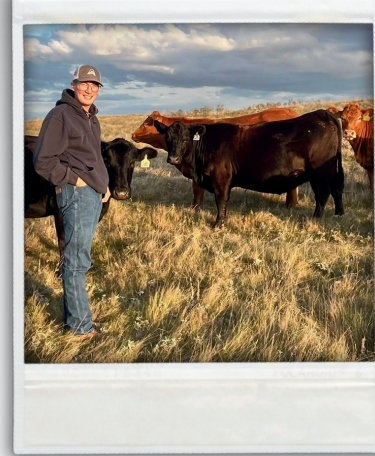


Lot 64 son



Lot 64 son

VISITORS AND VISITED



OPEN HEIFERS

All sell with one unit of semen of a bull of your choice in our battery. Option to buy choice of A or B or double-up on the same money



LOT 65A

65A

TREF NINA 115N

PUREBRED (93/87.6) COW - DB POLLED - RED
03/02/25 - TREF 115N - NPF3376940

TREF EZ STREET 107E
HL EZ MONEY 821H
TREF FRANKIE 420F

SYES EASY GOING 77E
TREF JUKE BOX 762J ET
TREF DARK CHOCOLATE 205D

WULFS CAPER 3303C
TREF COCOA BEAN 107C
LFLC BANK ACCOUNT 701B
TREF DUSTY ROSE 220D

COLE BUSINESSMAN 104B
MISS SYES RANSOM 76X
VL YES MAN 111Y
TREF SOPHISTICATION 207S

ACT BW
75
ADJ WW
611
ADJ YW
874

	CE	BW	WW	YW	MK	TM	CM	SC	DC	YG	CW	RE	MB	\$TPI
EPDS	14	-0.6	58	80	24	53	8	0.59	17	-0.55	20	1.09	-0.35	92.51
% RANK	20	20	75	85	60	75	20	50	5	15	85	30	95	80

LOT 65A: This deep and broody daughter of EZ Money has the look that will definitely catch any cattleman's eye. Her dam is a ET Easy Going cow that goes back to our TREF Sophistication cow.



Lot 65B

65B

TREF NAMESAKE 131N

PUREBRED (100/89.9) COW - DB POLLED - RED
03/14/25 - TREF 131N - NPF3376968

TREF EZ STREET 107E
HL EZ MONEY 821H
TREF FRANKIE 420F

B BAR BENTLEY 8D
TREF HONEY OATS 660H ET
TREF CHARLOTTE 192C

WULFS CAPER 3303C
TREF COCOA BEAN 107C
LFLC BANK ACCOUNT 701B
TREF DUSTY ROSE 220D

IVY'S BUBBA WATSON HTZ24B
B BAR WHISKEY GIRL
RPV PAYNES DERBY 46Z
TREF ZAZU 892Z

ACT BW
89
ADJ WW
647
ADJ YW
974

	CE	BW	WW	YW	MK	TM	CM	SC	DC	YG	CW	RE	MB	\$TPI
EPDS	12	0.3	61	88	28	59	8	0.64	16	-0.57	32	1.16	-0.42	107.6
% RANK	35	35	65	70	20	45	20	35	10	10	50	20	>95	55

LOT 65B: Long, stretchy EZ Money daughter out of a ET B Bar Bentley cow that raised one of our high selling Hardcore sons last year. Lots of maternal in this heifer.



LOT 66A

66A

TREF NIKKI 118N

PUREBRED (100/87.8) COW - HOMO POLLED - DB BLACK
03/02/25 - TREF 118N - NPF3377015

WULFS HANDIWORK T027H
TREF KANSAS 1607K ET
TREF BASIL 012B

TREF GUNPOWDER 290G
TREF 765J
TREF EISLEY 304E

LFLC DENVER 857D
TECS DELUX 1644D
RUNL STETSON 850S
TREF YELLOW JELLO 712Y

SYES EASY GOING 77E
TREF DAKOTA LOVE 290D
TREF COAL TRAIN 707C
TREF BOMBSHELL 004B

ACT BW
87
ADJ WW
587
ADJ YW
920

	CE	BW	WW	YW	MK	TM	CM	SC	DC	YG	CW	RE	MB	\$TPI
EPDS	12	-0.1	53	77	24	50	9	0.6	14	-0.54	18	1.08	-0.31	85.28
% RANK	35	25	85	85	60	85	10	35	40	15	90	35	95	90

LOT 66A: Should be lots of maternal predictability with the likes of TREF Kansas, TREF Gunpowder, and TREF Coal Train in her background. Very good chance of being homo black.



LOT 66B

66B

TREF NALANI 136N

PUREBRED (94/87) COW - HOMO POLLED - DB BLACK
03/17/25 - TREF 136N - NPF3377022

WULFS HANDIWORK T027H
TREF KANSAS 1607K ET
TREF BASIL 012B

TREF ZEUS 232Z
TREF DAKOTA LOVE 290D
TREF ADDIE 912A

LFLC DENVER 857D
TECS DELUX 1644D
RUNL STETSON 850S
TREF YELLOW JELLO 712Y

ROMN TOW TRUCK 111T
TREF RED WINE 232R
TREF YOU TUBE 517Y
TREF 711L

ACT BW
85
ADJ WW
565
ADJ YW
905

	CE	BW	WW	YW	MK	TM	CM	SC	DC	YG	CW	RE	MB	\$TPI
EPDS	11	0.6	49	70	25	49	8	0.7	14	-0.52	16	0.93	-0.26	84.38
% RANK	45	40	95	95	50	90	20	30	40	20	90	65	85	90

LOT 66B: This heifer is the maternal sister to TREF Gunpowder. Classy looking heifer with some stretch and rear quarter.



OPEN HEIFERS



LOT 67A

67A

TREF NIECE 132N

PUREBRED (100/88.4) COW - HOMO POLLED - RED
03/14/25 - TREF 132N - NPF3376969

TOMV DIESEL 619 D
TREF Hardcore 204H
TREF DELANEY 204D
B BAR BENTLEY 8D
TREF HAZEL 605H
TREF ZIG ZAG 882Z

GV AUSTIN 701A
MISS TOM 118Y
JYF YIELDMASTER 80Y
TREF TREASURE 304T

IVY'S BUBBA WATSON HTZ24B
B BAR WHISKEY GIRL
SVS USER FRIENDLY 524U
TREF X-POSE 682X

ACT BW	96
ADJ WW	664
ADJ YW	960

EPDS	CE	BW	WW	YW	MK	TM	CM	SC	DC	YG	CW	RE	MB	\$TPI
	6	3	78	127	30	69	5	0.4	15	-0.52	46	1.35	-0.35	119.6
% RANK	90	85	15	10	15	5	70	65	20	20	15	5	95	35

LOT 67A: Very long bodied daughter of TREF Hardcore. The Hardcores are well known for their growth and milk. We rarely let his daughters leave but this year we're letting two go. She has 15 epds in the top 25%!



LOT 67B

67B

TREF NANNY 137N

PUREBRED (100/87.3) COW - HOMO POLLED - RED
03/20/25 - TREF 137N - NPF3376977

TOMV DIESEL 619 D
TREF Hardcore 204H
TREF DELANEY 204D
WULF'S AMAZING BULL T341A
TREF HOLLYWOOD 608H
TREF YELLOW JELLO 712Y

GV AUSTIN 701A
MISS TOM 118Y
JYF YIELDMASTER 80Y
TREF TREASURE 304T

HUNT MR JOCK 44J
WULF'S ULTRA DIAMOND 8571U
LVL'S TOP CRITERIA 8862P
TREF WISHBONE 512W

ACT BW	88
ADJ WW	615
ADJ YW	972

EPDS	CE	BW	WW	YW	MK	TM	CM	SC	DC	YG	CW	RE	MB	\$TPI
	7	2.6	72	116	32	68	4	0.65	14	-0.59	34	1.34	-0.29	108.5
% RANK	80	75	30	20	5	10	85	35	40	5	45	5	90	50

LOT 67B: She is one of the top prospects in our heifer pen. If you recall, her full brother, TREF Marshall 608M, was the bull we retained of the Choice Selection lot we sold in our 2025 sale. Vaughn Limousin picked the choice, also a Hardcore son. She has 12 EPDs in the top 25%.



LOT 68A

68A

TREF NONAH 142N

PUREBRED (96/88.7) COW - DB POLLED - BLACK
03/30/25 - TREF 142N - NPF3376986

RICHMOND CRUSADER SRD 53C
RICHMOND FANTOM SRD 102F
RICHMOND BLUSH SRD 93D
JYF YIELDMASTER 80Y
TREF DELANEY 204D
TREF TREASURE 304T

RICHMOND ZODIAC SRD 29Z
RICHMOND ZANDY SRD 49Z
RICHMOND BLACKOUT SRD 10B
RICHMOND BLUSH SRD 178B

TMF SYMBOL 188S
AIRLIE TARA
ROMN JUSTICE
TREF 403H

ACT BW	55
ADJ WW	581
ADJ YW	911

EPDS	CE	BW	WW	YW	MK	TM	CM	SC	DC	YG	CW	RE	MB	\$TPI
	9	3.3	61	99	30	61	4	0.4	8	-0.44	46	1.14	-0.32	126.3
% RANK	65	90	65	50	15	30	85	65	90	40	15	25	95	25

LOT 68A: Here's the maternal sister to the legend TREF Hardcore. She is moderate framed and thick. Her sire is Richmond Fantom and we are finding them to be heavy milking and productive.



LOT 68B

68B

TREF NORTHWEST 130N

PUREBRED (100/96.4) COW - DB POLLED - BLACK
03/13/24 - TREF 130N - NPF3376967

RICHMOND CRUSADER SRD 53C
RICHMOND FANTOM SRD 102F
RICHMOND BLUSH SRD 93D
AR COLONEL 531C
AR FA LA LA LA LA 8139F
AR AWE UH-HUH 361A

RICHMOND ZODIAC SRD 29Z
RICHMOND ZANDY SRD 49Z
RICHMOND BLACKOUT SRD 10B
RICHMOND BLUSH SRD 178B

SVL POLLED LEADER 114A
SVL POLLED EXCELANT 758X
CF POLLED MESQUITE 268W
AR UH-HUH 824U

ACT BW	90
ADJ WW	661
ADJ YW	1005

EPDS	CE	BW	WW	YW	MK	TM	CM	SC	DC	YG	CW	RE	MB	\$TPI
	9	3.3	61	99	30	61	4	0.4	8	-0.44	46	1.14	-0.32	126.3
% RANK	65	90	65	50	15	30	85	65	90	40	15	25	95	25

LOT 68B: A bigger framed heifer out of the only fullblood cow on the place that weaned off at 660 lbs. She has a sister that is really getting the job done as a first calf heifer at our place. She too will be a great one with her milk EPD in the top 5%. Check out the Purebred status at 100/96.4. You can do lots of things with her.



OPEN HEIFERS



LOT 69A

69A

TREF NADINE 104N

PUREBRED (93/91.4) COW - DB POLLED - DB BLACK
02/24/25 - TREF 104N - NPF3376935

BALAMORE ENDEAVOR 701E
BALAMORE HERSHEY 0120H
CLARKS EXTRAVAGANT KISS
TREF GUNPOWDER 290G
TREF KIKI 890K
TREF BLOOM 039B

RLF YARDLEY 601Y
CLARKS AFFECTIVE KISS
CLARKS BLOCKBUSTER
DKC UNFORGETTABLE KISS
SVES EASY GOING 77E
TREF DAKOTA LOVE 290D
CF JIM DANDIE 216U
TREF PICTURESQUE 031P

ACT BW 75
ADJ WW 634
ADJ YW 988

	CE	BW	WW	YW	MK	TM	CM	SC	DC	YG	CW	RE	MB	\$TPI
EPDS	13	-0.2	59	91	28	58	9	0.3	14	-0.57	24	1.15	-0.32	95.44
% RANK	25	25	70	65	20	50	10	80	40	10	70	20	95	50

LOT 69A: Check her out! She has phenotype, she has pedigree, she has the performance, and she has predictability. With TREF Dakota Love (Gunpowers dam) and TREF Bloom (Jim Dandie daughter) she will flat out produce. Our first daughters of Hershey did an impressive job in 2025.



LOT 69B

69B

TREF NAOMI 120N

PUREBRED (100/91.2) COW - DB POLLED - BLACK
03/03/25 - TREF 120N - NPF3376944

BALAMORE ENDEAVOR 701E
BALAMORE HERSHEY 0120H
CLARKS EXTRAVAGANT KISS
RICHMOND GRID IRON SRD 171G
BLCC K6 MISS SIX COW
GREENWOOD MISS PYN 6D

RLF YARDLEY 601Y
CLARKS AFFECTIVE KISS
CLARKS BLOCKBUSTER
DKC UNFORGETTABLE KISS
RICHMOND GRAND DUKE SRD 8D
RICHMOND BIG MISCHIEF SRD 189B
B BAR COGNAC 1B
GREENWOOD PLD WYLEE

ACT BW 83
ADJ WW 577
ADJ YW 907

	CE	BW	WW	YW	MK	TM	CM	SC	DC	YG	CW	RE	MB	\$TPI
EPDS	11	1	55	84	27	54	6	0.49	14	-0.59	21	1.22	-0.37	86.73
% RANK	45	45	80	75	30	70	55	65	40	5	80	15	>95	85

LOT 69B: Moderate made Hershey calf out of a heifer we imported from Canada and successfully flushed. This is her natural calf.



LOT 70A

70A

TREF NATASHA 127N

PUREBRED (100/88.9) COW - DB POLLED - RED
03/11/25 - TREF 127N - NPF3376962

WULFS FIFTY T804F
JBV MILESTONE 206K
JBV BUBBLES 702D
TREF HARDCORE 204H
TREF LYDIA 907L
TREF CHARDONEY 168C

LFLC BANK ACCOUNT 701B
TECS DANTEAN 1629D
HUNT CREDENTIALS 37C ET
JBV GENESIS 110Y
TOMV DIESEL 619D
TREF DELANEY 204D
ROMN ZINGRAY 125Z
TREF YOGURT 765Y

ACT BW 78
ADJ WW 660
ADJ YW 919

	CE	BW	WW	YW	MK	TM	CM	SC	DC	YG	CW	RE	MB	\$TPI
EPDS	11	1.4	68	102	33	67	7	0.6	16	-0.52	30	1.09	-0.39	98.59
% RANK	45	55	40	45	3	10	35	35	10	20	55	30	>95	70

LOT 70A: Super long bodied JBV Milestone daughter and thick as well. Her dam is a first calf heifer who is a direct daughter of TREF Chardoney 168C, pictured in Lot 7.



LOT 70B

70B

TREF NYLA 133N

PUREBRED (100/89.8) COW - HOMO POLLED - RED
03/15/25 - TREF 133N - NPF3376970

WULFS FIFTY T804F
JBV MILESTONE 206K
JBV BUBBLES 702D
TREF EZ STREET 107E
TREF LIL QUEEN 910L
TREF CLEMENTINE 106C

LFLC BANK ACCOUNT 701B
TECS DANTEAN 1629D
HUNT CREDENTIALS 37C ET
JBV GENESIS 110Y
WULFS CAPER 3303C
TREF COCOA BEAN 107C
JVF YIELDMASTER 80Y
TREF ZOWIE 806Z

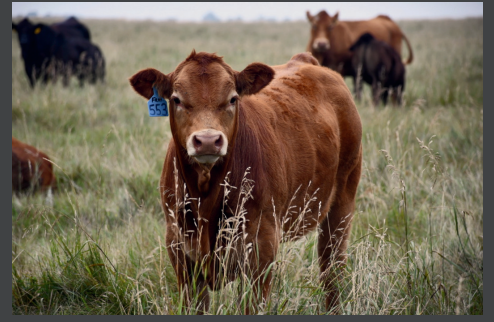
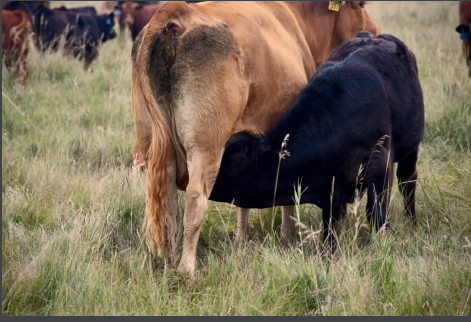
ACT BW 83
ADJ WW 567
ADJ YW 860

	CE	BW	WW	YW	MK	TM	CM	SC	DC	YG	CW	RE	MB	\$TPI
EPDS	12	0.7	56	77	27	55	7	0.42	16	-0.5	14	0.96	-0.31	81.76
% RANK	35	40	80	85	30	65	35	65	10	25	95	60	95	95

LOT 70B: A well put together calf that is out of a TREF EZStreet heifer. Her pedigree is stacked with milk and big time sires on the top and bottom side.



A GLIMPSE INTO THE SUMMER



OPEN BALDIE COMMERCIAL HEIFERS



71

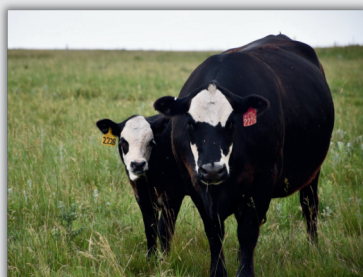
OPEN BALDIE COMMERCIAL HEIFERS

TAG	SIRE	BD	JAN. 14 WT
2333	Wulfs Klemens	2/12/25	862
1618	Richmond Fantom	2/26/25	826
2336	TREF Lionheart	2/27/25	820
1612	Richmond Fantom	3/2/25	788
2349	Wulfs Klemens	3/4/25	738
1619	TREF Kansas	3/8/25	744
2203	Wulfs Klemens	3/12/25	670
2201	TREF Lionheart	3/14/25	934
2230	Wulfs Klemens	3/16/25	656
2325	Wulfs Klemens	3/18/25	674
2228	Richmond Fantom	3/19/25	700
2158	TREF Kansas	3/20/25	772
2223	Richmond Fantom	3/20/25	800
AVG			767

LOT 71: For the past 9 years we've been experimenting using our Limousin bulls on F1 (Hereford/Angus cross) cows and heifers. The results have been dramatic as we see the direct results of heterosis. We have decided to part with all of the F2's (Limousin/Hereford/Angus cross) open heifer calves from this first mating. These beautiful heifers, of which the majority are baldies, have that extra hind quarter and ease of fleshing ability to make a great set of cows producing that highly sought after $\frac{3}{4}$ calf. They are all bangs vaccinated and daughters of the same bulls we use on our registered herd. They've been getting 3lbs of corn/distillers and free choice prairie hay. They will sell as a group. The price times the number in the group, all to go. All the EID tags are recorded and heifers are ready to go sale day out of state.



2210 and her Dam



2228 and her Dam this summer



Heifers of Lot 71



Longtime friends and customers, The Henley's from Britton, SD have a reputation of some of the best commercial Limousin cattle anywhere.

Whether it's competing against seedstock producers for breeding bulls at our production sale or in the case of buying our top draft of baldies, bred Limousin at the local salebarn for \$5400, they always take home the good ones. For the third year of purchasing these fine F1 females, they know...the good ones make you money, the rest cost you money. Thanks again!



REFERENCE SIRES

Sire	CED	BW	WW	ADG	YW	MK	TM	CEM	SC	DOC	YG	CW	CREA	MARB	\$TPI
ANCHOR B GOLD RUSH 48G	0	6.4	101	0.34	155	35	86	1	1.1	17	-0.62	70	1.96	-0.52	146.2
<i>B BAR AUSTIN HEALY 4D ET x ANCHOR B BAILEY 21B • PUREBRED(100/91.2) • Homo Polled (T) • Red</i>															
BALAMORE HERSHEY 0120H	14	-0.9	61	0.22	96	24	54	8	0.2	15	-0.61	26	1.26	-0.43	95.22
<i>BALAMORE ENDEAVOR 701E x CLARKS EXTRAVAGANT KISS • PUREBRED(93/90.5) • Homo Polled (T) • Homo Black (T)</i>															
TREF LIONHEART 516L	8	3.2	68	0.25	108	31	65	6	0.4	12	-0.49	47	1.26	-0.37	125.39
<i>RICHMOND FANTOM SRD 102F x TREF GOLDEN GLIMMER 516G • PUREBRED(93/93.3) • Homo Polled (T) • Black</i>															
HL EZ MONEY 821H	10	0.3	59	0.13	80	24	53	7	0.68	19	-0.66	21	1.15	-0.4	94.32
<i>TREF EZ STREET 107E x TREF FRANKIE 420F • PUREBRED(96/89.2) • Double Polled • Red</i>															
JBV MILESTONE 206K	15	-0.1	59	0.13	79	31	60	8	0.5	17	-0.46	9	0.81	-0.48	60.66
<i>WULFS FIFTY T804F x JBV BUBBLES 702D • PUREBRED(100/89.2) • Homo Polled (P-1) • Red</i>															
RICHMOND FANTOM SRD102F	4	4.7	69	0.27	113	28	62	2	0.7	12	-0.34	59	1.02	-0.47	128.9
<i>RICHMOND CRUSADER SRD 53C x RICHMOND BLUSH SRD 93D • PUREBRED(100/92.7) • Homo Polled (T) • Het Black (T)</i>															
RUNL JUSTIFIED 364 J	13	-0.4	88	0.31	138	20	64	8	0.5	16	-0.38	55	1.13	0.04	148.44
<i>RUNL RIALTO 135R x RUNL EVENING GLOW 205E • PUREBRED(100/88.7) • Homo Polled (T) • Homo Black (T)</i>															
WULFS KACTUS 4841K	-4	8	107	0.37	166	29	83	-2	1.4	14	-0.38	55	1.09	-0.03	117.36
<i>WULFS HORTON 7358H x WULFS BESAME MUCHO 4841B • PUREBRED(100/88.4) • Homo Polled (T) • Red</i>															
TREF HARDCORE 204H	5	4.4	90	0.4	154	33	78	3	0.3	15	-0.53	60	1.54	-0.26	145.75
<i>TOMV DIESEL 619D x TREF DELANEY 204D • PUREBRED(96/87.7) • Homo Polled (T) • Red</i>															
TREF JUNK YARD DOG 177J	11	0.8	69	0.19	98	42	77	7	0.5	18	-0.39	27	0.88	-0.1	102.81
<i>WULFS FIAT K683F ET x TREF CASSIE 177C • PUREBRED(94/89.6) • Homo Polled (T) • Red</i>															
TREF KANSAS 1607K	14	-0.9	55	0.1	71	23	50	10	0.7	12	-0.58	18	1.12	-0.34	89.87
<i>WULFS HANDIWORK T027H x TREF BASIL 012B • PUREBRED(100/87.7) • Homo Polled (T) • Homo Black (T)</i>															
TREF LARIET 660L	15	-1.9	56	0.12	76	29	58	8	0.7	19	-0.53	36	1.24	-0.44	121.7
<i>TREF EZ STREET 107E x TREF HONEY OATS 660H • PUREBRED(100/90) • Homo Polled (P-1) • Red</i>															



Anchor B Gold Rush 48G



Balamore Hershey 0120H



TREF Lionheart 516L



HL EZ Money 821H



JBV Milestone 206K



Richmond Fantom SRD102F



RUNL Justified 364J



WULFS Kactus 4841K



TREF Hardcore 204H



TREF Junk Yard Dog 177J



TREF Kansas 1697K



TREF Lariet 660L





**WHERE MUSCLE
STILL MATTERS**

Annual Production Sale

**SATURDAY, FEBRUARY 14TH, 2026
1 PM - AT THE RANCH
WETONKA, SOUTH DAKOTA**



**(605) 380-0014
TREFTZ@NVC.NET
TREFTZLIMOUSIN.COM**



**12510 370TH AVE
WETONKA, SD
57481**